

English
version



The 43rd TOKYO MOTOR SHOW 2013

NEWS

Venue guide included





**WORLD PREMIERE. THE NEW MINI.
AT TOKYO MOTOR SHOW 2013!**



THE NEW MINI. THE NEW ORIGINAL.

WWW.MINI.JP



MINI JAPAN Twitter official account: [@MINI_JAPAN](https://twitter.com/MINI_JAPAN)



MINI JAPAN Facebook official account: www.facebook.com/MINI.Japan

»EXHIBITED AT THE EAST HALL 2!



BMW i



Sheer
Driving Pleasure

CARBON
ELECTRIC.

THE FUTURE OF DRIVING PLEASURE BEGINS WITH BMW i.

BMW continues to innovate driving pleasure with the introduction of its revolutionary sub-brand, BMW i. Designed and engineered like none other, the all-new BMW i3 and BMW i8 have passenger cabins made of super light and super strong carbon fiber, along with a new and efficient powertrain, eDrive, which provides amazing acceleration and maximum torque right from the start. With innovative technology, sustainable materials and inspiring design, BMW i delivers an unprecedented driving experience that will usher in a new era of driving pleasure. This is not a dream, nor a fantasy – it is now a reality. The car of the future has finally arrived.

Register for a test drive online.

* Website is provided in Japanese.

bmw-i.jp



The 43rd TOKYO MOTOR SHOW 2013 NEWS

CONTENTS

| | |
|----|---|
| 05 | Greetings from JAMA Chairman Akio Toyoda, Chairman, Japan Automobile Manufacturers Association, Inc. (JAMA), (General Incorporated Association) A stream of technology information from Japan to the world |
| 06 | The 43rd Tokyo Motor Show 2013 世界にまだない未来を競え。 Compete! And shape a new future. Introduction |
| 08 | Notable models on display ● Japanese passenger vehicles ● Imported passenger vehicles ● Commercial vehicles ● Motorcycles |
| 16 | SMART MOBILITY CITY 2013 |
| 18 | Map of TOKYO BIG SIGHT venue EXHIBITORS LIST |
| 20 | List of company booths in West Halls 1 & 2 |
| 22 | List of company booths in West Halls 3 & 4 |
| 24 | List of company booths in East Halls 1, 2 & 3 |
| 26 | List of company booths in East Halls 4, 5 & 6 |
| 28 | Guide to Tokyo Waterfront City (Rinkai Fukutoshin) area |
| 31 | Odaiba Motor Fes event map |
| 32 | Tokyo Motor Show 2013 event map |

Publication
Japan Automobile Manufacturers Association, Inc. (JAMA),
(General Incorporated Association)

Production
Kodansha BC Ltd.

Nikkan Jidosha Shimbun

Overall Producers
Yuu Katsumata (Kodansha BC)
Masaru Ichikawa (Nikkan Jidosha Shimbun)

Producers
Hiroaki Uji (Kodansha BC)
Tadashi (Nikkan Jidosha Shimbun)

Planning/Chief Director
Hidekazu Ukai (Kodansha BC/Kai Office, Inc.)

■ Editorial Staff
Kodansha BC Ltd
Directors
Shunsaku Iiboshi
Takashi Sakamoto
Yuzuru Iijima

Nikkan Jidosha Shimbun
Director
Akira Takekawa

■ Design
Meta+Maniera Inc.
Masayuki Shinozawa
Kaoru Furutsu
Natsumi Kato

■ Accounting Director
Kodansha BC Ltd
Fumihiko Okuyama
Koji Kobayashi
Hideki Nishigami

Nikkan Jidosha Shimbun
Toru Nakamura
Hiroaki Miyanaga
Takayuki Shinohara

Koyusha Co., Ltd.
Katsuhiko Serata
Yuichiro Sugo
Keiju Yamazaki
Kyoto Futatsugi
TMSN Secretariat (Koyusha Co., Ltd.)
Hiroshi Hidano
Maki Konno

Koyusha Co., Ltd. Editorial Staff
Art Director
Hideyuki Muto (Moak-1 Co., Ltd.)
Writer
Osamu Shiba: DENSO
Shigeru Chikata: Mitsubishi Electric, UD Trucks
Ryuta Manzawa: Bosch, Continental Automotive

Translation
Dynaword Incorporated
Yukari Tazawa

Cooperation
Tokyo Sea Side Town Planning Council

AKS Co., Ltd

Printing
Dai Nippon Printing Co., Ltd

Chairman
Japan Automobile Manufacturers
Association, Inc. (JAMA)

Mr. Akio Toyoda

Chairman's Message

A stream of technology information
from Japan to the world



Profile

Akio Toyoda was born in 1956. He graduated from Keio University with a degree in law and joined Toyota Motor Corporation (TMC) in 1984. He has served in roles such as executive vice president at New United Motor Manufacturing, Inc. (NUMMI). In 2009, he became president of TMC, a position he still holds today.

The 43rd Tokyo Motor Show will be held from November 22 to December 1 at Tokyo Big Sight, the same venue as the 2011 show.

As you know, this year's motor show is special. From October 1st, an exposition introducing cutting-edge electronics technologies, CEATEC JAPAN, was held. That was followed by the ITS World Congress, a gathering of the world's ITS technologies, from October 14. Now the Tokyo Motor Show is about to wrap up a special year, particularly the second half, in which Japan has been the origin of a constant stream of information about technology carried to the world.

Another reason why this year is special is that Tokyo has just been chosen to be the host city of the 2020 Summer Olympics and Paralympics—the Tokyo brand is once again under the world's spotlight.

The number of tourists visiting Japan from overseas this year is set to surpass the record level reached in 2010, and as the Olympics and Paralympics draw closer, I think we can expect the activity to pick up further still.

Japan and Tokyo are adding fresh pages to their futures.

It is therefore appropriate that some 76 vehicles will be given their world premieres at this year's Tokyo Motor Show, far exceeding the number at the 2011 show.

Exhibitors' expectations for the show are obvious, and we, as the organizer, look forward to the excitement that so many world premieres will ignite as we set out to establish our show as the top technology motor show in the world.

"SMART MOBILITY CITY", the organizer-themed project launched in 2011, is returning this year with an enhanced program. Exhibitions, international symposiums and test rides will showcase a clear vision of how society might evolve within its relationship to vehicles and should give visitors a sense for what the future mobility means for them.

Coinciding with this year's Tokyo Motor Show, a number of car- and motorcycle-related events will be held throughout the Odaiba area from one week prior to and during the show. This is the first time that such events will be held simultaneously with the Tokyo Motor Show. With the Tokyo Motor Show as the hub of a greater car and motorcycle festival across the Odaiba area, we hope to attract as many car and bike fans as possible.

We look forward to seeing a large number of people make the journey to partake in this very special Tokyo Motor Show. And setting our sights on 2020, we will join together to advance gradual, ongoing efforts to make tomorrow brighter than today.



Automakers converge at the Tokyo Motor Show from around the world. Here they exhibit vehicles that embody the full extent of their technologies and passion, openly contesting with one another in terms of performance, beauty and vision. We want visitors to the show to experience a future that doesn't yet exist anywhere, a future that is shaped by this very competition and a desire to do even better. It will bring you energy and joy. The eyes of the world are on the 43rd Tokyo Motor Show. Please indulge in the passion and excitement!

Compete ! And shape a new future.

Event name The 43rd Tokyo Motor Show 2013

Organizers Japan Automobile Manufacturers Association, Inc. (JAMA)

Co-sponsors Japan Auto Parts Industries Association (JAPIA)

Japan Auto-Body Industries Association Inc. (JABIA)

Japan Automotive Machinery and Tool Manufacturers Association (JAMTA)

Japan Automobile Importers Association (JAIA)

*For details, visit the official website

Afternoon tickets: For entry after 3pm on Mon to Sat (available only at the venue)
Evening tickets: For entry after 6pm on Mon to Sat (available at the venue and Seven-Eleven stores nationwide)

● Tickets are available at convenience stores, public transportation offices, major travel agencies and ticket agencies.
● Tickets for the 43rd Tokyo Motor Show 2013 can be purchased online from anywhere in Japan and abroad. A service is also available that allows admission by a ticket displayed on the screen of your smartphone or tablet terminal.

For ticket sales, visit: <http://www.tokyo-motorshow.com/en/>

Tickets for participation in events requiring pre-registration can be purchased using the e-tix online ticket service.



Please use public transport to travel to the venue

(travel times are estimates)

■ **Rinkai Line** (7-minute walk from Kokusai-tenjijô Station)

Osaki Sta. (JR) ← 13 min. → Kokusai-tenijjô Sta. ← 5 min. → Shin-Kiba Sta. (JR, Subway)

*Direct service at Osaki to JR Saikyo Line

→ Shibuya (20 min.) → Shinjuku (25 min.) → Ikebukuro (31 min.) → Omiya (56 min.) → Kawagoe (78 min.)

■ **Yurikamome** (3-minute walk from Kokusai-tenji-jō-seimon Station)

Shimbashi Sta. (JR, Subways) ← 22 min. → Kokusai-tenjijō-seimon Sta.

Toyosu Sta. (Subway) ← 8 min. → Kokusai-tenjiijō-seimon Sta.

■ **Free Shuttle Bus** (to/from Tokyo Big Sight East Exhibition Hall)

Tokyo Sta. (Marunouchi North Exit) ← 35 min. → Tokyo Big Sight

*Operates Nov. 23 (Sat) to Dec. 1 (Sun) at 5-10 min. intervals

*First service from Tokyo Sta. at 9am Services from Tokyo Big Sight between 11am and 30 min. after closing
(On the final day alone, 55 minutes after closing)

■ **Bus** (to/from Tokyo Big Sight Central Terminal)

Toei Bus Tokyo Sta. (Marunouchi South Exit, Yaesu Exit) ← 40 min. → Tokyo Big Sight

Monzen-Nakacho ← 30 min. → Tokyo Big Sight

km Flower Bus Hamamatsucho Sta. ← 40 min. → Tokyo Big Sight

Airport Bus Haneda Airport ← 25 min. → Tokyo Big Sight (Limousine Bus, Keihin Kyuko Bus)

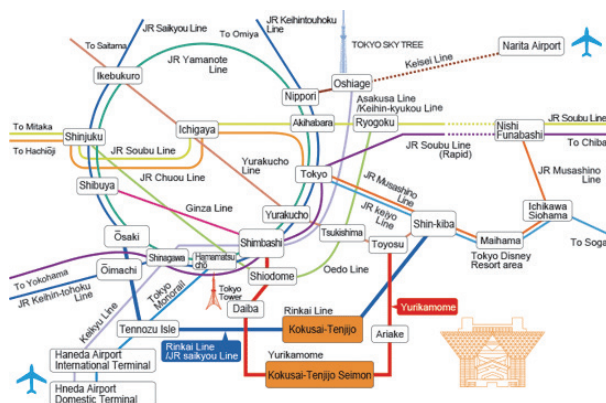
Narita Airport ← 60 min. → Tokyo Bay Ariake Washington Hotel (Limousine Bus)

Tokyo City Air Terminal ← 20 min. → Tokyo Big Sight (Limousine Bus) (one

■ **Water Bus** (2-minute walk from Ariake Terminal)

Hinode Pier (7-min. walk from JR Hamamatsucho Sta.) ← 25 min. → Tokyo Big Sight

*Please check website for operation status



Inquiries:

Tokyo Motor Show
Tokyo Big Sight Secretariat

TEL: 03-5530-1315

Hours: Mon-Fri 9am to 5pm (or show hours)



Official website QR code

JAMA 一般社団法人 日本自動車工業会
JAPAN AUTOMOBILE MANUFACTURERS ASSOCIATION, INC.
Jidosha Kaikan, 1-30, Shiiba Daimon 1-chome, Minato-ku, Tokyo 105-0012, Japan

Experience a future that doesn't yet exist anywhere, a future that is shaped by competition

The 43rd TOKYO MOTOR SHOW 2013 Events

1 Passenger Car Test Rides with Professional Drivers / Motorcycle Test Rides

Visitors can ride as passengers in the latest car models of the different brands on a purpose-built course to gain first-hand experience of their capabilities and explanations about their features. Cars are driven by members of the Automobile Journalists Association of Japan (AJAJ) and driving instructors. The motorcycle test ride program lets you take the handles.

●Passenger Car Test Rides with Professional Drivers

Nov. 22 (Fri) to 26 (Tue)

Participating brands: Suzuki, Subaru, Toyota, Nissan, Honda, Mazda, Mitsubishi, Lexus, Audi, Citroën, Jaguar, BMW, Volkswagen, Peugeot, Porsche, Volvo, MINI, Mercedes-Benz, Land Rover, Renault, Tesla (39 vehicles)



●Motorcycle Test Rides

Nov. 28 (Thu) to Dec. 1 (Sun)

Participating brands: Kawasaki, Suzuki, Honda, Yamaha, KTM, BMW (41 motorcycles)



2 Stage Events (Atrium)

Fuji Television and Tokyo FM will be hosting live performances and a variety of other entertainment on the stage in the 1st-floor atrium of the West Exhibition Hall.

3 Car of the Year Japan Announcement (Atrium)

On November 23 (Sat), a vote will determine the winner of the "Car of the Year Japan" accolade, with a presentation ceremony held the same day. Comedy duo Ogihayagi will also take the stage to share stories about cars they have owned.



5. Related Events

Tomica Corner (West Hall 3)

The toy car exhibition and retail corner sponsored by Tomi Co., Ltd. is now a permanent fixture at the show. The ever-popular Tokyo Motor Show Commemorative Model Tomica cars will again be on sale.



4 Tokyo Motor Show Symposiums 2013 (Conference Tower 6th Floor)

Symposiums will delve into a variety of automotive-related themes.

| Date | Topic / Presenters | Time |
|---------------|---|-------------------------|
| Nov. 26 (Tue) | 8th Japan ITS Promotion Forum ITS Japan | 1pm to 4:30pm |
| | The beginning of the future transport business "A new business stream by the cooperation of Safety and Security × Health care × ICT" | 1:30pm to 4:30pm |
| | Road Transport Bureau, Ministry of Land, Infrastructure, Transport and Tourism | |
| Nov. 27 (Wed) | ITS Seminar in Tokyo: Tokyo 2020, Considering Urban Road Transport — the Future of ITS ITS Japan / ITS Center, The University of Tokyo | 1:30pm to 5pm |
| Nov. 28 (Thu) | Symposium on Anti-Drunk Driving Japan Automobile Manufacturers Association, Inc. | 1pm to 3:30pm |
| Nov. 29 (Fri) | Create Japan's next-generation automobile society through the eyes of woman — Better relationships between automobiles and women Ministry of Economy, Trade and Industry / Pink Wheel Project / Next-Generation Vehicle Promotion Center | 2pm to 5pm |
| Nov. 30 (Sat) | Stroll with a car: you'll be a "car-tabist" (car travel enthusiast) from today! Nippon Road Destinations | 3:30pm to 5:30pm |
| Dec. 1 (Sun) | 14th Automobile Safety Symposium Road Transport Bureau, Ministry of Land, Infrastructure, Transport and Tourism | 1pm to 4pm |

"World Food Cup" Presented by Fuji Television (Outdoor Exhibition Space)

Fuji Television is presenting the food court, as it did in 2011. Catering trucks will be selling delicious, creative dishes from around the world in a contest to see which is the most popular.

Best of the Future

A new event that encapsulates the theme of this year's show. Visitors, divided into those born in the 20th century and those born in the 21st century, get to vote for the exhibit that best gave them a sense of the future. (Jointly hosted by Tokyo FM, Fuji Television and The Yomiuri Shimbun)

SMART MOBILITY CITY 2013 KURUMA NETWORKING

Supported by **DUNLOP**



SMC Test Rides (West Hall 4, Rooftop Exhibition Area, Truck Yard)

Test ride personal and micro mobility vehicles and electric two-wheelers looked to as mobility assistance tools for the near future. In the Rooftop Exhibition Area, visitors can watch automated driving demonstrations, try advanced driving support systems, and test drive EVs and PHVs.

Schedule:

| | |
|--|--------------------------------|
| Personal mobility experiences | Nov. 22 (Fri) to Dec. 1 (Sun) |
| Micro mobility experiences | Nov. 22 (Fri) to Dec. 1 (Sun) |
| Electric two-wheeler experiences | Nov. 22 (Fri) to Dec. 1 (Sun) |
| Advanced driving support systems | Nov. 22 (Fri) to Nov. 26 (Tue) |
| Automated driving demonstrations | Nov. 25 (Mon) to Nov. 26 (Tue) |
| Charging infrastructure and EV/PHV test drives | Nov. 27 (Wed) to Dec. 1 (Sun) |

(Organizers: Next-Generation Vehicle Promotion Center)

*Schedule is subject to change

Participating manufacturers: Suzuki Motor Corp., Subaru, Daihatsu Motor Co., Ltd., Toyota Motor Corp., Toyota Auto Body Co., Ltd., Nissan Motor Co., Ltd., Volkswagen Group Japan K.K., Honda Motor Co., Ltd., Mazda Motor Corp., Mitsubishi Motors Corp., Mercedes-Benz Japan K.K., ZieD Co., Ltd., Growth Dream Co., Ltd., Terra Motors Corp., Tokiwa Corp., Prozza Corp.

Cooperating universities/corporations:
Kanazawa University, Tokyo University of Agriculture and Technology, ZMP Inc.



Through broad technological innovation, vehicles of the future are beginning to connect to our lives and to society, adopting new roles and values and becoming our good friends and members of society. Smart Mobility City 2013 allows visitors to experience a vision for the future of automobiles and how they will relate to our lives and to society.

Exhibition (West Hall 4)

Visitors board car-shaped mini theaters where they learn about automobiles and the latest automotive technologies that are shaping a new future and get a feel for the kind of world that might be created. Corporations and other organizations representing a number of fields will also make presentations on cutting-edge technologies and products.

Conference

*Admission tickets bundled with participation vouchers for events requiring pre-registration can be purchased via the "e-tix" online ticket service

International Symposiums (free entry, pre-registration required)

"Connecting" to ICT, energy and communities to create new lifestyles

Automakers, IT companies and experts at the forefront of their fields from around the world will speak and hold sessions on the latest developments relating to automated driving and other technologies, and possibilities for future society and mobility.

Nov. 25 (Mon) (Conference Tower 6th Floor)

"Connected vehicles for enhancing safety and reassurance
— Possibilities of advanced driver assistance systems"

Nov. 28 (Thu) (Conference Tower 7th Floor)

"Future societies, future mobilities" (Special support: Toyota Motor Corporation)

Nov. 24 (Sun) (Conference Tower 6th Floor)

"Changing life through new technologies"

Organizers: Morning session: Association for the Promotion of Electric Vehicles / The Yomiuri Shimbun



Advanced Technology Seminars (Conference Tower 6th Floor)

Presentations about technology and systems by Smart Mobility City 2013 exhibitors

Presenters: Nissan Motor Co., Ltd. / Agency for Natural Resources and Energy, Ministry of Economy, Trade and Industry

Kids' Workshops (free entry)

Nov. 23 (Sat), 24 (Sun), 30 (Sat) and Dec. 1 (Sun)

Workshops for children, who represent the next generation. Where pre-registration is not required, sign up at the venue.



Must-see Exhibit Vehicles

Automakers from around the world present highly captivating, unique exhibits of the hottest new models about to be launched, through to the latest concept vehicles that portray a clear vision for the near future.

JAPANESE PASSENGER CARS

| Honda



NSX CONCEPT

A super sports model featuring a next-generation direct-injected V6 engine mounted on a lightweight vehicle body and a SPORT HYBRID SH-AWD hybrid system achieving outstanding fuel economy.



Honda S660 CONCEPT

A next-generation open-top sports-type mini-vehicle featuring dynamic styling and new initiatives, such as a Super cockpit interior to maximize space.



N-WGN

To be unveiled on press day, the N-WGN is the 4th N-Series model and will take on the Move and Wagon R with two unique styles—custom (above) and normal (right).



| NISSAN



BLADEGLIDER

Aerodynamically-focused, the triangular three-seat swept-wing body realizes ideal downforce and high G cornering and acceleration, yet is thrifty in its power use.

TEANA

A premium sedan with a design expressing sophistication, a cabin supporting the comfort of all passengers, and plenty of power for greater driving pleasure.



| TOYOTA



FV2

Operated not with a steering wheel, but by the driver shifting their body to intuitively maneuver the vehicle. Connects with other vehicles and traffic infrastructure to detect hazards. A car of the future that is emotionally connected to the driver.



FCV CONCEPT

World premiere. Under the body are a new small, lightweight FC stack and two high-pressure hydrogen tanks. A driving range of at least 500km. Three-minute refueling, on a par with gasoline vehicles.

NOAH CONCEPT

Class-first full hybrid system. The new, low-floor package enables a class-leading roomy interior with outstanding ease of ingress and egress and diverse seating arrangements.



VOXY CONCEPT

Employs exclusive aerodynamic parts to emphasize the low center of gravity, impressive wide-body, and overwhelming sense of presence. Pictured is the 2.0-liter gasoline engine model.



FT-86 Open concept

Japan premiere. A convertible that achieves both the thrill of the open-top and the joy of driving and sense of oneness with the vehicle offered by the 86.



JPN TAXI Concept

An appealing next-generation taxi concept car that aims to enliven city streets. The design centers on an electrically operated sliding door on the passenger-seat side from which passengers board and exit.



TOYOTA i-ROAD

An ultra-compact mobility package that provides the convenience of a motorcycle and the comfort and stability of a car, offering an enjoyable riding experience unlike either a car or a motorcycle.



| MAZDA

AXELA

Employs SKYACTIV technologies and KODO design. A world car with three powertrain options—gasoline, diesel and hybrid.





JAPANESE PASSENGER CARS

| SUZUKI



X-LANDER

Based on the Jimny, a hybrid vehicle incorporating a 1.3L engine, newly developed automatically controlled manual transmission, and highly efficient motor built onto a 4WD system.



Crosshiker

A compact crossover that fuses fresh new styling with a dynamic weight reduction and highly efficient powertrain. A concept car packed with lightweight and fuel-efficient technologies.



HUSTLER

A new-genre minicar combining an exterior that looks like it belongs in the outdoors with a roomy, comfortable and useful interior.



iV-4

A new compact SUV with a powerful design. Equipped with Suzuki's next-generation 4WD system ALLGRIP for running power.



HUSTLER Coupe

The challenge to a new genre of minicar, a crossover coupe with a beautiful silhouette. Adds the coupe silhouette to Suzuki's design variations.

| DAIHATSU



KOPEN

Based on the concept of a "New Fun+ open-top sports car with a new feel." Offers an improved drive and a new way of enjoying a car with body panels that can be removed and replaced.



DECA DECA

Achieves a sense of openness and wide viewpoint thanks to its height (1,850mm) and high seating position. Features like double doors on both sides lend to an openness and viewpoint equal to any ordinary van.



FC Deco DECK

A zero-emission next generation vehicle with a liquid fuel cell system ideal for a mini vehicle. Equipped with a compact, low-cost fuel cell generator that opens up new possibilities.



| MITSUBISHI

Concept GC-PHEV

A next-generation full-size SUV based on a front engine rear-wheel layout PHEV system with electronically controlled full-time 4WD. Achieves superior handling stability and driving performance.



Concept AR

Flexible seating layout allowing for new styles of communication. A compact MPV with plenty of room for six people.



Concept XR-PHEV

Combining a specialty coupe with an SUV, this compact SUV is developed to take driving pleasure to new levels. Uses a front engine, front-wheel layout PHEV system.

| SUBARU

CROSSOVER 7 CONCEPT

A new face in the Subaru lineup is a seven-seat crossover with a sophisticated urban look and an elegant interior featuring original smooth tan leather seats.



VIZIV EVOLUTION CONCEPT

Demonstrating the brand's future direction, both aesthetically and technologically, this is a plug-in hybrid combining the newly-developed 1.6-liter Horizontally-Opposed direct injection turbo "DIT" engine with electric motors.



| LEXUS



LF-NX

A next-generation compact SUV outfitted with a newly-developed 2.0-liter turbo engine for superior driving and environmental performance.

RC

With a 3.5-liter gasoline or 2.5-liter hybrid powertrain, the Lexus RC is a sports coupe aiming to provide an engaging and exhilarating Lexus driving experience.





IMPORTED PASSENGER CARS

| Volkswagen

XL 1

A two-seater plug-in hybrid with fuel consumption of merely 0.9 liters per 100km. The lightweight carbon fiber reinforced polymer body enables 50km coverage in all-electric mode with speeds up to 160 km/h.



Golf Variant Highline

The first complete redesign in four years for launch in the near future. With a stylish exterior, it is equipped with a 1.4-liter TSI engine (140 PS).

| Mercedes-Benz



Concept S-Class Coupé

The Japanese premiere of this new interpretation of modern luxury which had its world premiere at the 2013 Frankfurt Motor Show.

| AUDI

Audi S3 Sedan

Making its Japan premiere, this elegant saloon is 135mm longer and 15mm wider than the A3 Sportback, a perfect fit for Japanese roads.



| SMART

smart BRABUS electric drive

A high-performance model with its electric motor tuned by BRABUS. Based on the carbon-neutral, zero-emission smart fortwo electric drive.



| Jaguar



F type

All-aluminum two-seat convertible. The F type won the 2013 World Car Design of the Year

| LAND ROVER



Range Rover Sport

A hybrid model, Land Rover's first, has been added to the Sport range. Combines a 292PS 3-liter V6 diesel engine and electric motor.

| Tesla Motors

MODEL S

With a rigid body structure, nearly 50/50 weight distribution and a low center of gravity, Model S offers the responsiveness and agility expected from the world's best sports cars while providing the ride quality of a sedan.



| Radical

SR3 SL

The latest road-legal version of the popular SR3. A production sports model fitted with a Ford EcoBoost 240PS 2-liter turbocharged gasoline engine and six-speed paddleshift.





| BMW

i8

BMW's first full production electric sports car. Driving like a high-performance sports car, the i8 has consumption and emission values of a compact car.



i3

Electric vehicle to be launched in Japan in spring of 2014, with a 170PS motor and a cruising range of 130 to 160 km.



4 Series Convertible.

World premiere. This four-seater with strikingly distinct design features and a three-piece retractable hardtop brings new enjoyment to the open-sky driving experience.

| Porsche A.G.

Panamera Turbo S Executive

The world premiere of the most powerful model in the Panamera range, incorporating both high performance and luxury. Achieves power output of 570PS and a top speed of 310 km/h.



Concept Coupé

Revealing a new generation of Volvo design possibilities, this plug-in hybrid combines an electric motor with a 2.0-liter 4-cylinder engine with supercharger and turbo.



| Peugeot



2008

A compact urban crossover to be launched next week. Offers agile driving and the latest interior design with versatile functionality and ample space.

| Citroën

GRAND C4 PICASSO

Built on Citroën's new platform, this concept vehicle achieves balance between versatility and cabin space at a high level. To be launched in Japan in autumn 2014.



| ALPINA



D3 Bi Turbo

Features a straight-six 3-liter diesel turbo engine. With maximum power output of 350 PS and maximum torque of 71.4 kgm, this vehicle has been exquisitely tuned by Alpina.



COMMERCIAL VEHICLES

| UD TRUCKS • VOLVO TRUCKS



Quester

UD Trucks' first heavy-duty truck developed for growth markets, particularly in Asia. To be produced entirely overseas. Some seven variations are available to serve a wide range of applications.



Quon Fuel Demonstrator

Making its world premiere, this demonstration vehicle aims for a fuel efficiency improvement of more than 10% compared to the current Quon. UD Trucks pursues higher fuel efficiency and this is their laboratory on wheels.



VOLVO FH

Designed based on safety, comfort and ergonomics, the FH is a world leader. Features include a spacious interior allowing the driver to move about the cab easily.

| ISUZU

ERGA Hybrid

A parallel hybrid route bus model with elements including a diesel engine, electric motor, automated manual transmission and lithium-ion battery.



1.5-ton WOLSELEY CP Type Truck

Reference exhibit. The very first model of Isuzu trucks, completed in 1924 after Isuzu overcame the Great Kanto Earthquake. Said to be the starting point of Isuzu's truck manufacturing.

| Mitsubishi Fuso

Canna

A truck developed by a team of female employees for women professionals. Based on the Canter Eco Hybrid compact hybrid truck.



| HINO

Poncho Mini

A compact non-step bus enabling easy boarding and exit. Popular as a community or kindergarten bus. Demonstrates a host of new sought-after features for public buses.



Premium Cruiser

A touring coach that seeks to change the game in terms of comfort on bus tours. Compared to a normal capacity of 55 passenger seats, its 13 super-luxury seats offer first-class comfort.



S'ELEGA

Features for detecting driving conditions and mitigating collision damage have evolved. Boasts enhanced safety performance with an advanced PCS system.



MOTORCYCLES

| HONDA

CB1300 SUPER BOL D'OR

Be one of the first to view this exhilarating new street sportbike from Honda, always seeking to create the very best naked street sportbikes for a new age.



CBR250R

Sport quarter. A global sports bike initially created by Honda Thailand. Entry-level type equipped with a full cowl. Get an update on its latest potential.



DUNK

This is the world premiere for the new 50cc scooter. A sporty model targeting the younger generation with a socket for charging smartphones.



| YAMAHA

TRICITY Concept

A 3-wheeled commuting scooter concept model with a planned release for summer 2014. Offering greater enjoyment, it has a 125cc engine, a light and sporty ride, a feeling of stability and is easy to use.



BOLT Café

With the BOLT's slim and compact chassis and 950cc air-cooled V-twin engine as a base, the BOLT Café shows an example of how owners can customize the bike to their own tastes.



EVINO

This electric scooter concept model proposes a convenient commuter vehicle with all the necessary functions for short-distance trips while remaining affordable.

| SUZUKI

EXTRIGGER

An electric mini motorcycle offering new sensations for having fun. It has the electric motor unit of the e-Let's electric scooter fitted to its compact frame, similar to that of a small bicycle.



Recursion

588cc middle-class motorcycle. Designed to meet sophisticated adult tastes, it realizes easy handling and economy on city streets, and an exhilarating, torquey ride on winding roads.



| KAWASAKI

Z1000 ABS Special Edition

This milestone model in the new generation of naked sportbikes boasts superbike-level performance having tremendous versatility with practicality and safety in all environments.



Ninja 400 ABS Special Edition

A twin-cylinder sportbike with full fairing, this is a new model to be launched during the Tokyo Motor Show. The edgy design accentuates its sharp look that draws people's gaze.



| KTM

1290 Super Duke R

A supersport model with an intense visage featuring a headlamp unit made compact using LEDs. Realizes practicality and sports performance at a whole new level.



SMART MOBILITY CITY 2013

Supported by 

KURUMA NETWORKING - Vehicles connecting with people's lives and society



Another Motor Show to experience the future of automobiles and society

Automobiles have long supported people's lives, industries and society as a safe, convenient and efficient way of transportation.

These basic values of automobiles will not change.

However, with global awareness rising regarding the earth's environment and

resources, advancement of telecommunication infrastructure and changes in lifestyles, the society is undergoing great changes.

Within this trend, automobiles will take on a new role by "networking" - connecting our houses, our daily lives and society using the latest energy and communication technologies.

Automobiles will no doubt be our good friend, as well as an important member of our society.

Automobiles will run, turn, stop and - "connect."

The future of automobiles and the dreams of our lives and society await.

Exhibition

Next-generation automobiles will change our lifestyle, city and society. Various companies with advanced technology will come together from around the world.

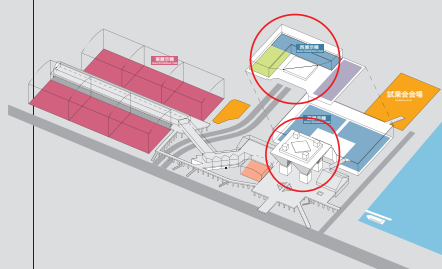
telecommunications, electronic devices, housing, and materials, as well as research institutions, will propose "automobiles and lifestyles of tomorrow" from their viewpoints, based on their respective technologies and systems. The exhibit area consists of the Advanced Technology & Product Exhibit Zone and the Core Exhibit Zone. In the Advanced Technology & Product Exhibit Zone, corporations, organizations, and government institutes related to telecommunications, the environment, and energy will display their exhibits and give presentations on state-of-the-art products, technologies, systems, and services. In the Core Exhibit Zone, the Motor Show's main sponsor will present a hands-on simulated exhibit that will allow visitors to experience next-generation automobiles and the advanced social system that will surround them, as well as the lifestyles and dreams of the new society that will be brought about by "connecting" automobiles.

SMC TOURS (Organizer's exhibit)

In the core exhibit, visitors "ride" a vehicle-shaped theater and discover six scenes of the SMART MOBILITY CITY. Enjoy a virtual experience of the future of cars.

I. Connecting for safety

○ Pedestrian-to-vehicle communication, vehicle-to-vehicle communication, road-to-vehicle communication, and Driving Safety Support Systems (DSSS) ○ Nighttime detection, ASV



II. Connecting for convenience

○ ACC and CACC, platoon operation, coordinated operation

III. Connecting for fun

○ ITS spot ○ Latest navigation systems ○ Telematics

IV. Connecting for reassurances

○ Disaster prevention systems, disaster recovery systems, etc. ○ Probe information systems

V. Connecting for smart lifestyles

○ Automobiles connected to smart houses, smart appliances, and HEMS ○ Demand response and remote operation of home devices ○ Self energy management during power outage ○ Various types of next-generation vehicles, charging terminals for EVs, and hydrogen stations, etc. ○ Regional energy control centers (regional EMS), etc. ○ Mega solar systems, off-shore wind power generation systems, etc.

VI. Connecting for freedom

The vehicle of your dreams, enjoyable mobility, etc.

Test Ride

SMC Test Rides: Experience Smart Driving

On the Truck Yard, visitors will be able to gain first-hand experience with personal mobility and ultra-compact mobility vehicles, and electric two-wheelers, which are currently hot topics in the marketplace. The exhibit area on the building's roof will provide visitors rare opportunities to experience the latest mobility technologies. Here, autonomous driving demonstrations will be held and visitors will be able to test-ride advanced driving support systems, EVs, and PHVs.

Participating companies (tentative)

Suzuki, Subaru, Daihatsu, Toyota, Toyota Auto Body, Nissan, Volkswagen, Honda, Mazda, Mitsubishi, Mercedes Benz, Zead, Growth Dream, Terra Motors, and Tokiwa, Prozza

Cooperating universities and corporations (tentative)

Kanazawa University, Tokyo University of Agriculture and Technology, ZMP

Personal mobility experiences

Single-person vehicles that have been reborn as new mobility means. Providing expanded convenience and enjoyment.

Duration: November 22 (Fri.) - December 1 (Sun.)

Location: Core Exhibit (inside West Hall 4)



Honda
UNI-CUB



Toyota
Winglet

Micro mobility experiences

New one-to-two-person vehicles that are compact and provide easy means of transportation

Duration: November 22 (Fri.) - December 1 (Sun.)

Location: Core Exhibit (inside West Hall 4) and Truck Yard (outdoor)



Nissan
New Mobility CONCEPT

Electric two-wheeler test rides

Experience the eco-friendly and comfortable ride of electric two-wheelers, which use an electric motor for the motive power.

Duration: November 22 (Fri.) - December 1 (Sun.)

Location: Rooftop Exhibit (outdoor)

Charging infrastructure and EV/PHV test drives

Test-ride an EV or plug-in hybrid vehicle and witness rapid charging, as well.

Duration: November 27 (Wed.) - December 1 (Sun.)

Location: Rooftop Exhibit (outdoor), Sponsored by the Next Generation Vehicle Promotion Center

Advanced driver assistance systems

This is how far functions that ensure safety and provide peace of mind, such as collision avoidance brakes, have advanced.

Duration: November 22 (Fri.) - December 1 (Sun.)

Location: Rooftop exhibit area



Subaru Legacy Touring Wagon



Daihatsu Tanto Custom



Mercedes Benz E250 Avantgarde



Suzuki Wagon R



Mitsubishi Outlander PHEV



Volkswagen e-up!

Conference

How will society change by automobiles "connecting"

An international symposium is scheduled during which auto makers, IT companies, and internationally renowned experts will present lectures and sessions regarding development trends for advanced technology such as automated driving, as well as the society of tomorrow and potential for future mobility. An advanced technology seminar by participating companies and organizations as well as a Kids Workshop will also be held.

International symposium

"Connected vehicles for enhancing safety and reassurance—Possibilities of advanced driver assistance systems"

Location: Conference Rooms 605-608, Conference Tower 6F

Date: 10:30-16:50 on November 25 (Mon.), 2013

Advanced Driver Assistance Systems (ADAS) connect vehicles to its surroundings such as the people, roads, and city functions, thereby making the vehicles even safer and more convenient. This conference examines this new relationship between people and vehicles from a variety of perspectives, and will look into its various potentials for the future.

"Future society and future mobilities"

Location: International Conference Room, Conference Tower 7F

Date: 11:00-16:45 on November 28 (Thu.), 2013

How will our lifestyles change when automobiles connect with society, cities and people? Experts will assemble to debate and the future of automobiles and lifestyles from technical, social and cultural perspectives. (Special Cooperation by Toyota Motor Corp.)

"Next Generation Mobility and Our Lives of the Future"

Location: Conference Rooms 605-608, Conference Tower 6F

Date: November 24 (Sun.), 2013

Morning: Award ceremony for the Ultra-compact Mobility Design Contest
Time: 10:30 - noon
(Sponsored by the Association for the Promotion of Electric Vehicles / The Yomiuri Shimbun)

Afternoon: Symposium "Next Generation Mobility and Our Lives of the Future"
Time: 13:00-16:00
(Sponsored by Ministry of Land, Infrastructure, Transport and Tourism / The Yomiuri)

Advanced Technology Seminar

Fuel Cell Seminar in Tokyo

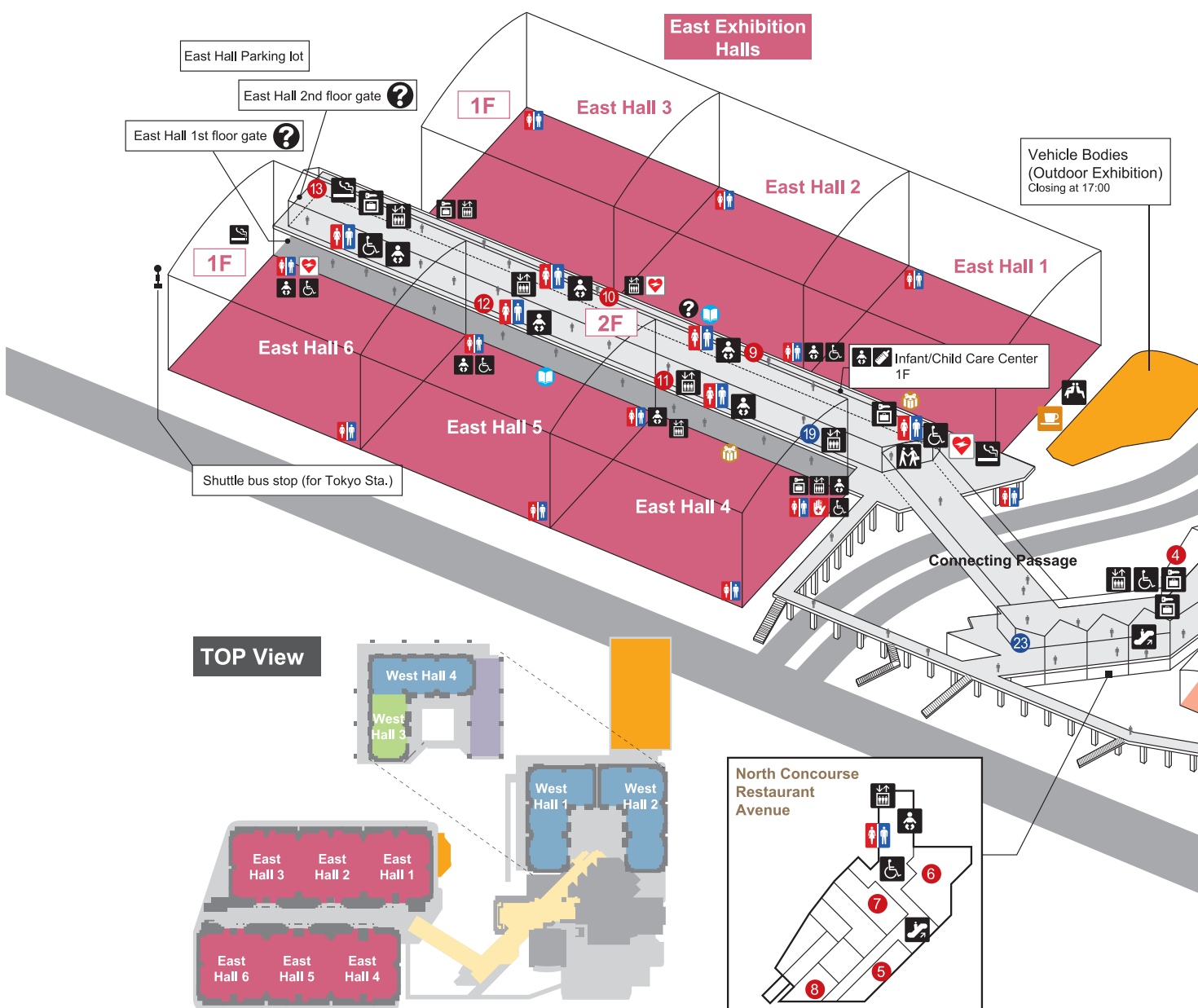
Date & time: November 28 (Thu.) 13:30-16:40

Location: Conference Rooms 605 & 606, Conference Tower 6F

Will describe the status of R&D at various carmakers toward market introduction of fuel cell vehicles and the actions they are taking toward establishing hydrogen stations.

(Participating companies and organizations: Nissan Motor Co., Ltd., Agency for Natural Resources and Energy)

TOKYO BIG SIGHT MAP



EXHIBITORS LIST

| | | | | | | | |
|---|-----------|--|-----------|---|-----------------|---|---------------------|
| 3D AUTO PROTECH CO., LTD | P26 E5008 | Bridgestone Corporation | P26 E5204 | Hitachi Automotive Systems, Ltd. | P24 E2202 | Koivai Co., Ltd. | P22 W3505 |
| ADVICS CO.,LTD. | P26 E5203 | Campagna Motors / BrainTrading Co. | P20 C202 | Hitachi Metals, Ltd. | P24 E2006 | KTM-Japan KK | P26 EMO1 |
| Agency for Natural Resources and Energy | P22 SMC26 | CAR MATE MFG.CO.,LTD. | P24 E2104 | Hitachi Vehicle Energy, Ltd. | P24 E2202 | Kuzeh Corp. | P22 W3405 |
| Aisin AI Co., Ltd. | P26 E5203 | Citroën (PEUGOT CITROËN JAPON CO. LTD.) | P26 EP098 | Hitachi, Ltd. | P24 E2202 | Kyokuto Kaihatsu Kogyo Co.,Ltd. | P25 E001 |
| Aisin AW Co., Ltd. | P26 E5203 | Clarion Co., Ltd. | P24 E2202 | HKT CORPORATION | P22 W3407/W3301 | Kyosan Denki Co., Ltd. | P24 E2201 |
| Aisin Chemical Co., Ltd. | P26 E5203 | College of Engineering, Nihon University | P22 W3102 | Honda Motor Co., Ltd. | P21 WP03/WM02 | Kyoto Tool Co., Ltd. (KTC) | P26 E5208 |
| Aisin Seiki Co., Ltd. | P26 E5203 | Continental AG | P20 W1101 | Hyundai Motor Japan Co., Ltd. | P25 E005 | Kyowa Kogyo Co., Ltd. | P26 E5108 |
| Aisin Takaoka Co., Ltd. | P26 E5203 | D Art Co., Ltd. | P22 SMC17 | Ikeya Formula Co., Ltd. | P22 W3001 | Land Rover (JAGUAR LAND ROVER LIMITED) | P27 EP08B |
| Akebono Brake Industry Co., Ltd. | P26 E5007 | DAIDO METAL CO., LTD. | P22 W3503 | Imasen Electric Industrial Co., Ltd. | P22 W3404 | LEXUS (TOYOTA MOTOR CORPORATION) | P24 EP02 |
| Alcoa Wheel Products Japan Ltd. | P22 W3303 | Daihatsu Motor Co., Ltd. | P24 EP06 | infatech K.K. | P22 W3308 | Mahle GmbH | P20 W1302 |
| Alpina | P24 EP05 | Datsystem Co., Ltd. | P24 E2106 | IPF corporation | P22 W3403 | MAHLE Engine Components Japan Corp. | P20 W1302 |
| Alpine Electronics, Inc. | P22 W3004 | Delta Kogyo Co., Ltd. | P24 E2010 | Isamu Paint Co., Ltd. | P22 W3402 | MAHLE Filter Systems Japan Corp. | P20 W1302 |
| AMG (Mercedes-Benz Japan) | P20 WP01B | DENSO CORPORATION | P22 E2201 | Isuzu Motors Limited | P25 EC02 | Maruko Kaihoki Co., Ltd. | P26 E5008 |
| ANDEN CO., LTD. | P24 E2201 | ecomomo CORPORATION | P22 SMC19 | ITS Japan | P22 SMC20 | Matsui Universal Joint Corporation | P26 E5106 |
| Asahi Denso Co., Ltd. | P22 W3306 | EXEDY Corporation | P26 E5006 | IWATA BOLT Co., LTD | P20 W1004 | Mazda Motor Corporation | P26 EP15 |
| Asahi Glass Co., Ltd. | P22 SMC14 | Fine Sinter Co., Ltd. | P22 W3504 | Jaguar (JAGUAR LAND ROVER LIMITED) | P27 EP08A | Mercedes-Benz | P20 WP01A |
| ASMO Co., Ltd. | P24 E2201 | Fuji Kiko Co., Ltd. | P26 E5107 | Japan Auto Parts Industries Association | P26 E5008 | Midori Hokuyo Co., Ltd. | P22 W3401 |
| ASTEER Co., Ltd. | P26 E5008 | FUJITSU TEN LIMITED | P22 W3003 | Japan Auto-Body Industries Association inc. | P25 E001 | Mikuni Corp. | P20 W1005 |
| AUDI AG. | P27 EP13 | Fujitsu Giken Kogyo Co., Ltd. | P26 E5008 | Japan Automobile Federation | P22 SMC11 | Militac (CARROZZERIA JAPAN Co.,Ltd.) | P26 EP15 |
| Bewith, Ltd. | P20 W1102 | Goodyear Japan Ltd. | P26 E5104 | JATCO Ltd | P26 E4001 | MINI Japan | P24 EP03 |
| BMW AG | P24 EP03 | Growth Dream Co.,Ltd. | P22 SMC13 | JTEKT CORPORATION | P26 E5202 | Ministry of Land, Infrastructure, Transport and Tourism, Road Transport Bureau | P22 W3202 |
| BNL (Japan) Inc. | P22 W3304 | HAMANA WORKS CO., LTD. | P25 E001 | KAWASAKI MOTORS CORPORATION JAPAN | P26 EMO2 | Ministry of Land, Infrastructure, Transport and Tourism, Bureau of Public Roads | P22 SMC04 |
| Bosch Corporation | P20 W1301 | Hamanakodensho Co., Ltd. | P24 E2201 | Keihin Corporation | P25 E1003 | Ministry of the Environment | P23 SMC27 P22 SMC21 |
| | | Hino Motors, Ltd. | P25 E001 | KEN OKUYAMA DESIGN | P20 C201 | Mistuba Corporation | P24 E2108 |
| | | Hiriko JP | P22 SMC09 | KOBOT Co., Ltd. | P22 SMC16 | MITOLLOY | P26 E5207 |
| | | Hirschvogel Holding GmbH | P26 E5109 | KOITO MANUFACTURING CO., LTD. | P24 E2101 | Mitsubishi Electric Corporation | P24 E3203 |

Restaurant & Cafe

Opening times may change in line with events

- 1 フードコート&ビア Eat iT!
FOOD COURT&BEER Eat iT!
- 2 タリーズコーヒー
Tully's Coffee
- 3 カフェテラスロイヤル
Cafe Terrace ROYAL
- 4 プロント
PRONTO
- 5 カフェテリア マーメイド
Cafeteria Mermaid
- 6 ザ・ビッグラウンジ
THE BIG LOUNGE
- 7 らあめん 大景
Ramen Noodle Restaurant Daikei
- 8 日比谷マツモトロー
HIBIYA Matsumoto
- 9 天井や トップライト
Tendonya Top Light
- 10 カフェテリア ヴォワール
Cafeteria Voir
- 11 ロイヤルカフェテリア
ROYAL CAFETERIA
- 12 カフェ カレー王国
UNITED KINGDOM OF CURRY
- 13 香港飲茶楼 ル・パルク
HONGKONG EXPRESS Le PARC
- 14 アルポルト 東京ビッグサイト
Al Porto Tokyo Big Sight

Shops & Service Facilities

Opening times may change in line with events

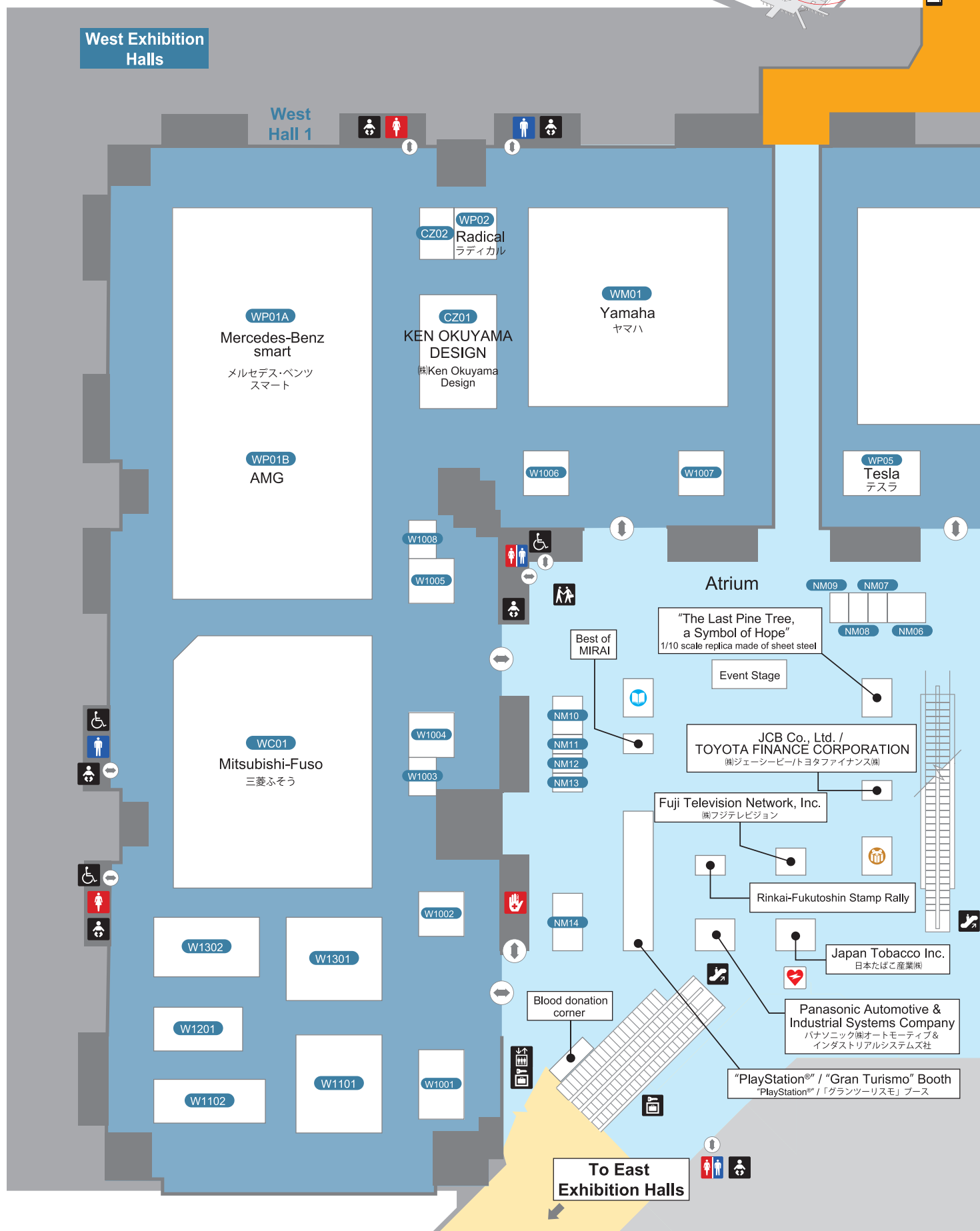
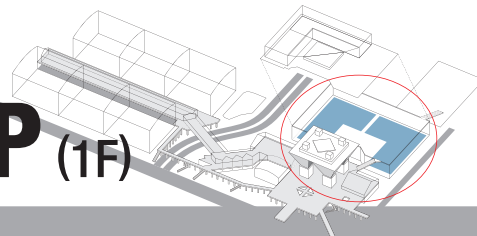
- 17 FamilyMart イベントプラザ店
FamilyMart/Convenience Store
- 18 FamilyMart エントランス店
FamilyMart/Convenience Store
- 19 FamilyMart ガレリア店
FamilyMart/Convenience Store
- 20 ATM | ゆうちょ銀行、セブン銀行、みずほ銀行、東京スター銀行
ATM/yucho,Seven Bank,Mizuho Bank,Tokyo Star Bank
- 21 ビジター&ビジネスセンター | パソコン インターネット コピー
Visitor & Business Center/Wide range of documentation tasks including copying,printing and PC operations,etc.
- 22 サービスコーナー
SERVICES CORNER
- 23 手荷物預かり所
Cloakroom



- ? インフォメーション Information
- 待ち合わせコーナー Meeting Point
- エレベーター Elevator
- エスカレーター Escalator
- 化粧室 Restroom
- 身障者用施設 Accessible Facility
- 乳幼児用施設 Nursery
- コインロッカー Coin Lockers
- 救護室 First Aid
- AED 自動体外式除細動機 AED/Automated External Defibrillator
- 喫煙場所 Smoking Area
- レストラン・カフェ・休憩ゾーン Restaurant & Cafe, Rest Zone
- オフィシャルグッズショップ Official Goods Shop
- 自動車ガイドブック販売所 Guide Book Stand

| | | | | | | | |
|--|-----------|-------------------------------------|-----------|--|-----------|---|-----------|
| Mitsubishi Motors Corporation | P21 WP04 | Porsche AG | P27 EP07 | TADANO Ltd | P25 OE01 | UD Trucks Corporation | P25 EC03 |
| Mitsubishi Fuso Truck and Bus Corporation | P20 WC01 | Prozza Corporation | P22 SMC18 | Taiho Kogyo Co., Ltd. | P20 W1002 | U-Shin Ltd. | P24 E2009 |
| Molex Japan Co., Ltd. | P22 W3305 | R.W.C. Co., Ltd. | P25 E1001 | Takayama Cars Co., Ltd. | P22 CZ05 | Vehicle Information and Communication System Center | P22 SMC05 |
| National Agency for Automotive Safety & Victim's Aid | P22 W3202 | Radical Sportscars Ltd. | P20 WP02 | Terra Motors Corporation | P22 SMC15 | Volkswagen AG | P27 EP12 |
| National Automobile License Plate Council | P22 W3101 | Rays Co., Ltd. | P26 E5206 | Tesla Motors, Inc. | P20 WP05 | Volvo (AB Volvo) | P26 EP14 |
| Next Generation Vehicle Promotion Center | P22 SMC06 | RENAULT JAPON CO., LTD. | P26 EP10 | The Research Association of Hydrogen Supply/Utilization Technology | P22 SMC07 | Volvo Trucks Japan (AB Volvo) | P25 EC04 |
| NGK Spark Plug Co., Ltd. | P24 E2008 | Resc, Ltd. | P22 CZ03 | The Yokohama Rubber Co., Ltd. | P26 E5105 | Waitec Co., Ltd. | P22 W3408 |
| NHK Spring Co., Ltd. | P26 E5102 | Riken Corporation | P22 W3508 | Tohnichi Mfg. Co., Ltd. | P20 W1007 | Yachiyo Industry Co., Ltd. | P22 W3302 |
| Nihon Automobile College | P22 CZ04 | Robert Bosch GmbH | P20 W1301 | TOHO CAR CORPORATION | P25 OE01 | Yamaha Corporation | P20 WM01 |
| NIPPON FRUEHAUF COMPANY LTD. | P25 OE01 | Samvardhana Motherson Group | P20 W1003 | TOKAI RIKI CO., LTD. | P24 E2102 | Yamato Industrial Co., Ltd. | P26 E5008 |
| Nippon Piston Ring Co., Ltd. | P22 W3507 | SANDEN Corporation | P22 W3002 | Tokai Rubber Industries, Ltd. | P24 E2109 | Yazaki Corporation | P24 E2007 |
| Nippon Thermostat Co., Ltd. | P22 W3406 | Sanwa Seiki Ltd. | P22 W3501 | TOKICO TECHNOLOGY LTD. | P24 E2202 | Yorozu Corporation | P26 E5005 |
| NIPPON TREX Co. Ltd. | P25 OE01 | Schaeffler AG | P26 E6009 | TOKIWA Corporation | P22 SMC10 | YP System Co., Ltd. | P26 E5205 |
| Nishioka Malleable Iron Ind. co., Ltd. | P26 E5008 | Sekisui House, Ltd. | P22 SMC03 | TONE Co., Ltd. | P20 W1006 | YUASA TRADING CO., LTD. | P22 W3502 |
| Nissan Motor Co., Ltd. | P26 EP11 | SG motors Co., Ltd. | P25 OE01 | TOSHIBA CORPORATION | P22 SMC03 | ZF Friedrichshafen AG | P20 W1001 |
| Nissan Shatai Co., Ltd. | P24 E202 | ShinMaywa Industries Ltd. | P25 OE01 | Toyoda Gosei Co., Ltd. | P24 E3012 | Zied Co., Ltd. | P22 SMC12 |
| Nissin Kogyo Co., Ltd. | P24 E4002 | smart (Mercedes-Benz Japan) | P20 WP01A | Toyota Auto Body Co., Ltd. | P25 EB01 | | |
| NITTSUSHOJI CO., LTD. | P25 OE01 | Snap-on Tools Japan K.K. | P26 E5003 | Toyota Boshoku Corporation | P24 E3105 | | |
| NOK CORPORATION | P25 E1002 | Sonic Design Co., Ltd. | P20 W1201 | Toyota Housing Corporation | P23 SMC24 | | |
| NSK Ltd. | P26 E5201 | Stanley Electric Co., Ltd. | P24 E2103 | Toyota Industries Corporation | P25 E1004 | | |
| NTN Corporation | P26 E5101 | Subaru (Fuji Heavy Industries Ltd.) | P25 EP01 | Toyota Motor Corporation | P24 EP04 | | |
| NTT DOCOMO, Inc. | P22 SMC01 | SUGAWA SHATAI CO., LTD | P25 OE01 | Toyota Motor East Japan, Inc. | P24 EB03 | | |
| Ohlins Racing AB Milltec Corp | P26 E5004 | Sumitomo Electric Industries, Ltd. | P24 E2110 | TPR Co., Ltd. | P22 W3506 | | |
| Ohno Rubber Industrial Co., Ltd. | P26 E5008 | Sumitomo Rubber Industries, Ltd. | P26 E5103 | Trade Commission of Mexico in Japan Promexico | P20 W1008 | | |
| Omron Automotive Electronics Co., Ltd. | P25 E1005 | Suzuki Motor Corporation | P26 EP16 | TS Tech Co., Ltd. | P24 E2107 | | |
| Peugeot (PEUGOT CITROËN JAPON CO. LTD.) | P26 EP09A | Taiho Kogyo Co., Ltd. | P24 E3011 | TUM CREATE | P22 SMC08 | | |

WEST1/2 HALLS MAP (1F)



Outdoor Exhibition Area

Test ride program by
professionals' driving
Nov.22 (Fri.)-26 (Tue.)

Motorcycle test ride
Nov.28 (Thu.)-Dec.1 (Sun.)

Electrically-assisted bicycle
test ride
Nov.28 (Thu.)-Dec.1 (Sun.)

World Food Cup



10:00~16:30

Opening times may change in line with events



West
Hall 2

WM02 WP03

Honda

(Passenger Cars / Motorcycles)

ホンダ

(乗用・二輪)

WP04

Mitsubishi
三菱

? インフォメーション Information

人 待ち合わせコーナー Meeting Point

エレベーター Elevator

エスカレーター Escalator

化粧室 Restroom

身障者用施設 Accessible Facility

乳幼児用施設 Nursery

コインロッカー Coin Lockers

救護室 First Aid

AED 自動体外式除細動機 AED/Automated External Defibrillator

喫煙場所 Smoking Area

レストラン・カフェ・休憩ゾーン Restaurant & Cafe, Rest Zone

オフィシャルグッズショップ Official Goods Shop

自動車ガイドブック販売所 Guide Book Stand

■カロッツェリア Carrozzeria

CZ02 カンパーニャモータースジャパン Campagna Motors Japan

■部品／機械器具 Parts, Machinery and Tools

W1001 ZF Friedrichshafen AG

W1002 大豊工業(株) Taiho Kogyo Co., Ltd.

W1003 Samvardhana Motherson Group

W1004 イワタボルト(株) Iwatobolt Co., Ltd.

W1005 (株)ミクニ Mikuni Corp.

W1006 TONE(株) TONE Co., Ltd.

W1007 (株)東日製作所 Tohnichi Mfg. Co., Ltd.

W1008 メキシコ大使館商務部PROMEXICO Trade Commission of Mexico in Japan Promexico

W1101 Continental AG

W1102 ビーウィズ(株) Bewith Enterprise Japan, Ltd.

W1201 (株)ソニックデザイン Sonic Design Co., Ltd.

W1301 Robert Bosch GmbH
ボッシュ(株) Bosch Corp.

W1302 MAHLE GmbH
(株)マーレフィルターシステムズ MAHLE Filter Systems Japan Corp.
マーレエンジンコンポーネンツジャパン(株) MAHLE Engine Components Japan Corp.

■新聞・雑誌コーナー Newspaper & Magazine Corner

NM01 (株)日刊自動車新聞社 Daily Automotive News

NM02 (株)モーターマガジン社 Motor Magazine Ltd.

NM03 (株)交通タイムス社 Kotsu Times Sha Co., Ltd.

NM04 (株)内外出版社 Naigai Publishing Co., Ltd.

NM05 (株)フォーイン Fourin, Inc.

NM06 (株)八重洲出版 Yaesu Publishing Co., Ltd.

NM07 (株)交通毎日新聞社 Kotsumainichi Shimbunsha Corp.

NM08 (株)ぼると出版 Porte Publishing Co.

NM09 (株)カーアンドレジャーニュース Car and Leisure News Inc.

NM10A (有)三樹書房 Miki Press

NM10B (株)グランプリ出版 Grand Prix Book Publishing Co., Ltd.

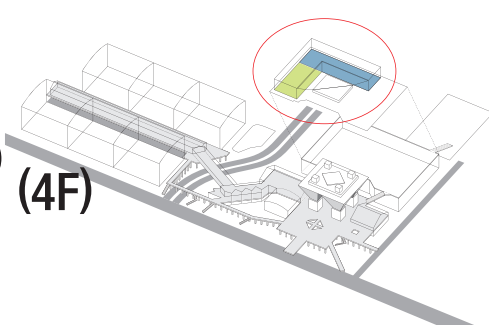
NM11 (株)ニ玄社 Nigensha Publishing Co., Ltd.

NM12 (株)講談社ビーシー Kodansha BC Ltd.

NM13 (株)ネコ・パブリッシング Neko Publishing

NM14 (株)三栄書房 San-eishobo Publishing Co., Ltd.

WEST3/4 HALLS MAP (4F)



Society of Automotive Engineers of Japan

-  エレベーター Elevator
-  エスカレーター Escalator
-  化粧室 Restroom
-  身障者用施設 Accessible Facility
-  乳幼児用施設 Nursery
-  コインロッカー Coin Lockers
-  AED 自動体外式除細動機 AED/Automated External Defibrillator
-  喫煙場所 Smoking Area
-  レストラン・カフェ・休憩ゾーン Restaurant & Cafe, Rest Zone

Rooftop Exhibition Area

Advanced driver assistance systems test Rides

Nov.22 (Fri.)-Dec.1 (Sun.)

Autonomous vehicle demonstrations

Nov.25 (Mon.)-26 (Tue.)

Charging infrastructure and EV/PHV test drives

Nov.27 (Wed.)-Dec.1 (Sun.)

SMART MOBILITY CITY 2013

Supported by



- SMC01** (株)NTTドコモ
- SMC02** マツダ(株)
- SMC03** 積水ハウス(株)
(株)東芝
本田技研工業(株)
- SMC04** 国土交通省 道路局
- SMC05** (一財)道路交通情報通信システムセンター
- SMC06** (一社)次世代自動車振興センター
- SMC07** 水素供給・利用技術研究組合
- SMC08** TUM CREATE
- SMC09** (株)Hiriko, jp
- SMC10** 常盤産業(株)
- SMC11** 日本大学工学部
- SMC12** ジード(株)
- SMC13** (株)グロースンドリーム
- SMC14** 旭硝子(株)
- SMC15** Terra Motors(株)
- SMC16** コボット(株)
- SMC17** (株)ディーアート
- SMC18** (株)プロツア
- SMC19** (株)エコモ
- SMC20** (特非)ITS Japan
- SMC21** (株)デンソー
- SMC22** 三菱自動車工業(株)
- SMC23** 日産自動車(株)
- SMC24** トヨタホーム(株)
- SMC25** トヨタ自動車(株)
- SMC26** 経済産業省 資源エネルギー庁
- SMC27** 環境省

- NTT DOCOMO, Inc.
- Mazda Motor Corp.
- Sekisuihouse, Ltd.
Toshiba Corp.
Honda Motor Co., Ltd.
- Ministry of Land, Infrastructure, Transport and Tourism
- Vehicle Information and Communication System Center
- Next Generation Vehicle Promotion Center
- The Research Association of Hydrogen Supply/Utilization Technology
- HIRIKO JP Co., Ltd.
- Tokiwa Corp.
- College of Engineering, Nihon University
- ZieD Co., Ltd.
- Growth Dream, Co.,Ltd.
- Asahi Glass Co., Ltd.
- Terra Motors Corp.
- KOBOT Co., Ltd.
- D Art Co., Ltd.
- Prozza Corp.
- ecom Corp.
- ITS Japan
- DENSO CORPORATION
- Mitsubishi Motors Corp.
- Nissan Motor Co., Ltd.
- Toyota Housing Corp.
- Toyota Motor Corp.
- Agency for Natural Resources and Energy
- Ministry of the Environment

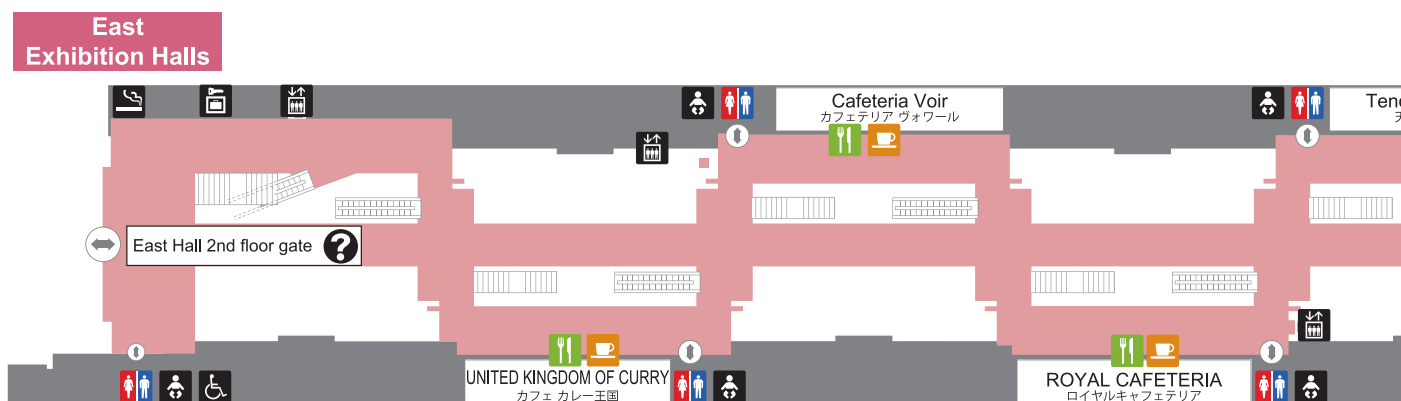
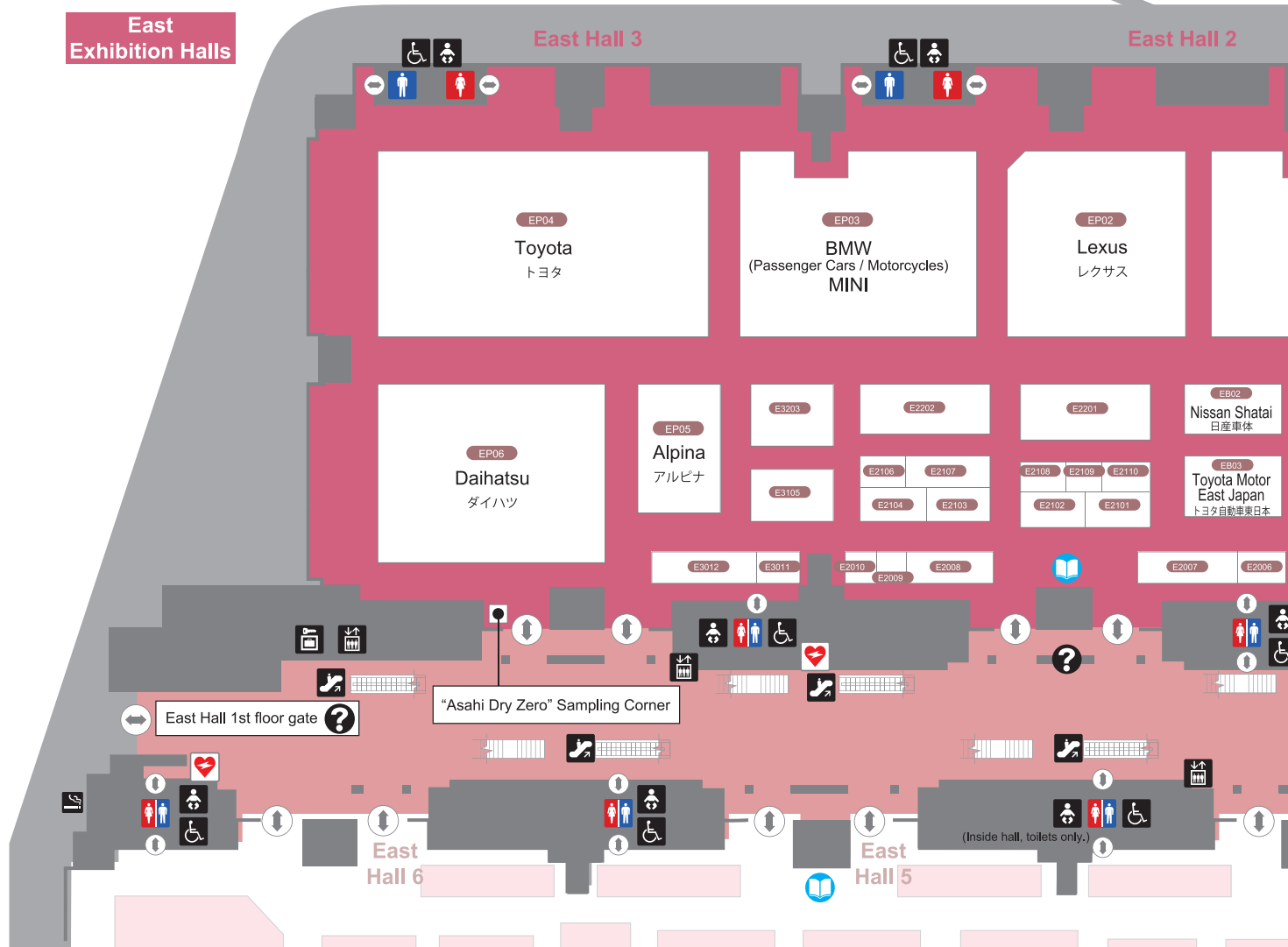
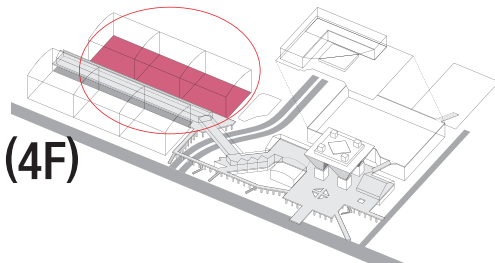
■カロッツェリア Carrozzeria

- CZ03** レスク(株) Resc, Ltd.
- CZ04** NATS日本自動車大学校 Nihon Automobile College
- CZ05** (株)高山自動車 Takayama Cars Co.,Ltd.

■部品／自動車関連サービス Parts, Automobile Related Services

- W3001** (株)イケヤフォーミュラ Ikeya Formula, Co., Ltd.
- W3002** サンデン(株) Sanden Corp.
- W3003** 富士通(株) Fujitsu Ten Ltd.
- W3004** アルパイン(株) Alpine Electronics, Inc.
- W3101** (一社)全国自動車標榜協議会 National Automobile License Plate Council
- W3102** (一社)日本自動車連盟 Japan Automobile Federation
- W3201** 九都県市首脳会議環境問題対策委員会
大気保全専門部会 9Capital prefecture city Expert committee of the atmospheric environment section
- W3202** 国土交通省 自動車局
(独)自動車事故対策機構 Ministry of Land, Infrastructure, Transport and Tourism, Road Transport Bureau, Engineering Policy Division National Agency for Automotive Safety & Victim's Aid
- W3301** 国土交通省 自動車局 Ministry of Land, Infrastructure, Transport and Tourism, Road Transport Bureau, Engineering Policy Division
- W3302** 八千代工業(株) Yachiyo Industry Co., Ltd.
- W3303** アルコア・ホイール・プロダクツ・ジャパン(株) Alcoa Wheel Products Japan Ltd.
- W3304** BNLジャパン(株) BNL Japan Inc.
- W3305** 日本モレックス(株) Molex Japan Co., Ltd.
- W3306** 朝日電装(株) Asahi Denso Co., Ltd.
- W3308** インファステック(株) Infastech K.K.
- W3401** ミドリホクヨー(株) Midori Hokuyo Co., Ltd.
- W3402** イサム塗料(株) Isamu Paint Co., Ltd.
- W3403** IPF(株) IPF Corp.
- W3404** (株)今仙電機製作所 Imasen Electric Industrial Co., Ltd.
- W3405** (株)クゼー Kuzeh Corp.
- W3406** 日本サーモスタット(株) Nippon Thermostat Co., Ltd.
- W3407** HKT(株) HKT Corp.
- W3408** (株)ワータックス Watex Co., Ltd.
- W3501** 三輪精機(株) Sanwa Seiki Ltd.
- W3502** コアサ工機(株) Yuasa Co., Ltd.
- W3503** 大同メタル工業(株) Daido Metal Co., Ltd.
- W3504** (株)ファインシンター Fine Sinter Co., Ltd.
- W3505** (株)コイワイ Koikai Co., Ltd.
- W3506** TPR(株) TPR Co., Ltd.
- W3507** 日本ピストンリング(株) Nippon Piston Ring Co., Ltd.
- W3508** (株)リケン Riken Corp.

EAST1-3 HALLS MAP (4F)



- | | | | |
|----|----------------------------|--|--|
| ? | インフォメーション Information | 乳幼児用施設 Nursery | レストラン・カフェ・休憩ゾーン Restaurant & Cafe, Rest Zone |
| 人 | 待ち合わせコーナー Meeting Point | 授乳室 Nursery Room | コンビニエンスストア Convenience Store |
| エレ | エレベーター Elevator | コインロッカー Coin Lockers | オフィシャルグッズショップ Official Goods Shop |
| エス | エスカレーター Escalator | 救護室 First Aid | 自動車ガイドブック販売所 Guide Book Stand |
| 化 | 化粧室 Restroom | AED 自動体外式除細動機 AED/Automated External Defibrillator | |
| 身 | 身障者用施設 Accessible Facility | 喫煙場所 Smoking Area | |

SGモータース(株)
SG Motors Co., Ltd.
極東開発工業(株)
Kyokuto Kaihatsu Kogyo
Co., Ltd.
新明和工業(株)
ShinMaywa Industries, Ltd.

須河車体(株)
Sugawa Shatai
Co., Ltd.
(株)タダノ
Tadano Ltd.
東邦車輛(株)
Toho Car Corp.

日通商事(株)
Nittsu Shoji
Co., Ltd.
日本トレックス(株)
Nippon Trex
Co., Ltd.
日本フルハーブ(株)
Nippon Fruehauf
Co., Ltd.

(株)浜名ワークス
Hamana Works Co., Ltd.
(株)矢野特殊自動車
Yano Special Purpose
Vehicle Co., Ltd.
(一社)日本自動車車体工業会
Japan Auto-Body
Industries Association Inc.

■部品 Parts

E1001 (株)アール・ダブリュー・シー

E1002 NOK(株)

E1003 (株)ケーヒン

E1004 (株)豊田自動織機

E1005 オムロンオートモーティブエレクトロニクス(株)

E2006 日立金属(株)

E2007 矢崎総業(株)

E2008 日本特殊陶業(株)

E2009 (株)ユースン

E2010 デルタ工業(株)

E2101 (株)小糸製作所

E2102 (株)東海理化

E2103 スタンレー電気(株)

E2104 (株)カーメイト

E2106 (株)データシステム

E2107 ティ・エスデック(株)

E2108 (株)ミツバ

E2109 東海ゴム工業(株)

E2110 住友電気工業(株)

E2201 (株)デンソー
アスモ(株)
アンデン(株)
浜名湖電装(株)
京三電機(株)

E2202 日立オートモティブシステムズ(株)
(株)日立製作所
日立ピークルエナジー(株)
クラリオン(株)
トキコテクノ(株)

E3011 (株)タチエス

E3012 豊田合成(株)

E3105 トヨタ紡織(株)

E3203 三菱電機(株)

R.W.C. Co., Ltd.

NOK Corp.

Keihin Corp.

Toyota Industries Corp.

Omron Automotive Electronics Co., Ltd.

Hitachi Metals, Ltd.

Yazaki Corp.

NGK Spark Plug Co., Ltd.

U-Shin Ltd.

Delta Kogyo Co., Ltd.

Koito Mfg. Co., Ltd.

Tokai Rika Co., Ltd.

Stanley Electric Co., Ltd.

Car Mate Mfg. Co., Ltd.

Datasystem Co., Ltd.

TS Tech Co., Ltd.

Mistuba Corp.

Tokai Rubber Industries, Ltd.

Sumitomo Electric Industries, Ltd.

DENSO CORPORATION
Asmo Co., Ltd.
Anden Co., Ltd.
Hamanakodenso Co., Ltd.
Kyosan Denki Co., Ltd.

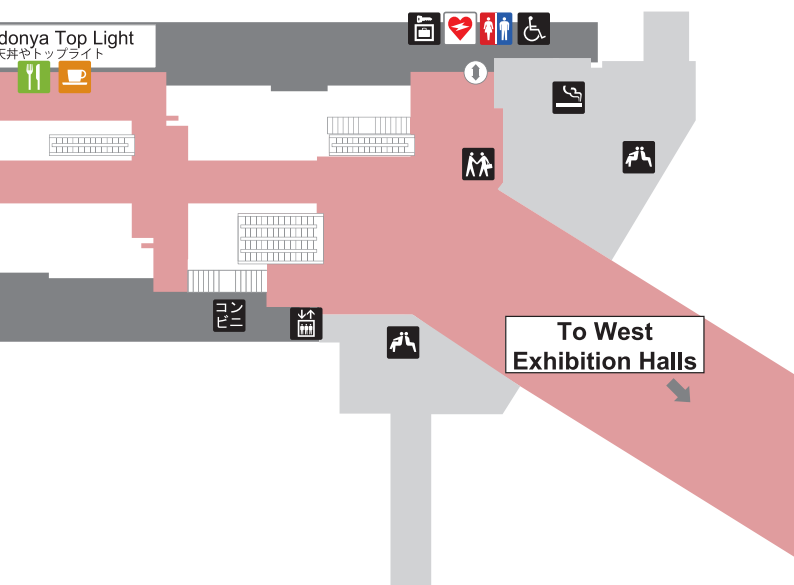
Hitachi Automotive Systems, Ltd.
Hitachi, Ltd.
Hitachi Vehicle Energy, Ltd.
Clarion Co., Ltd.
Tokico Technology Ltd.

Tachi-S Co., Ltd.

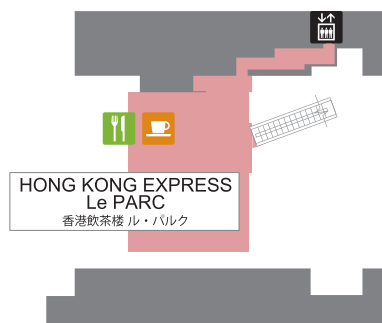
Toyoda Gosei Co., Ltd.

Toyota Boshoku Corp.

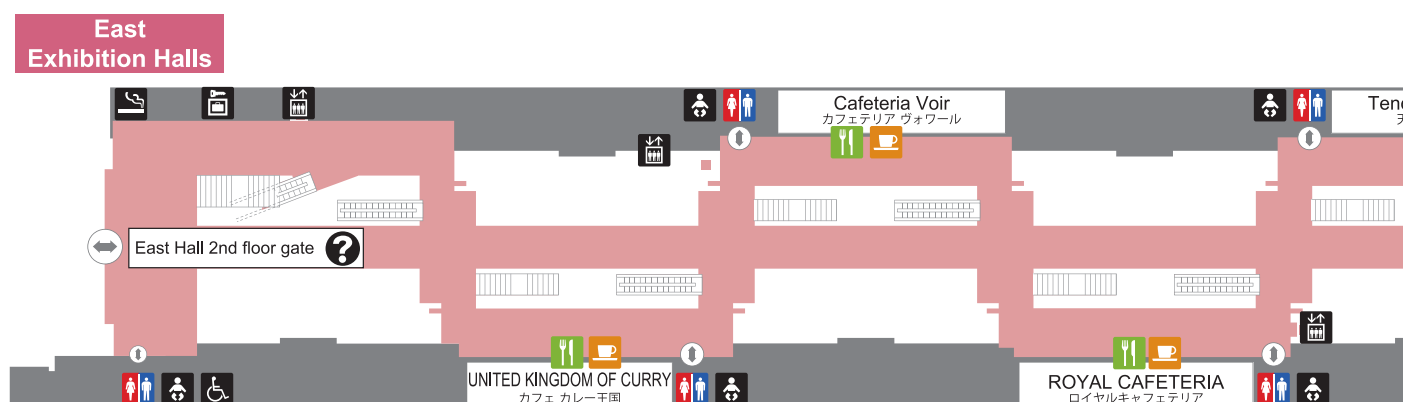
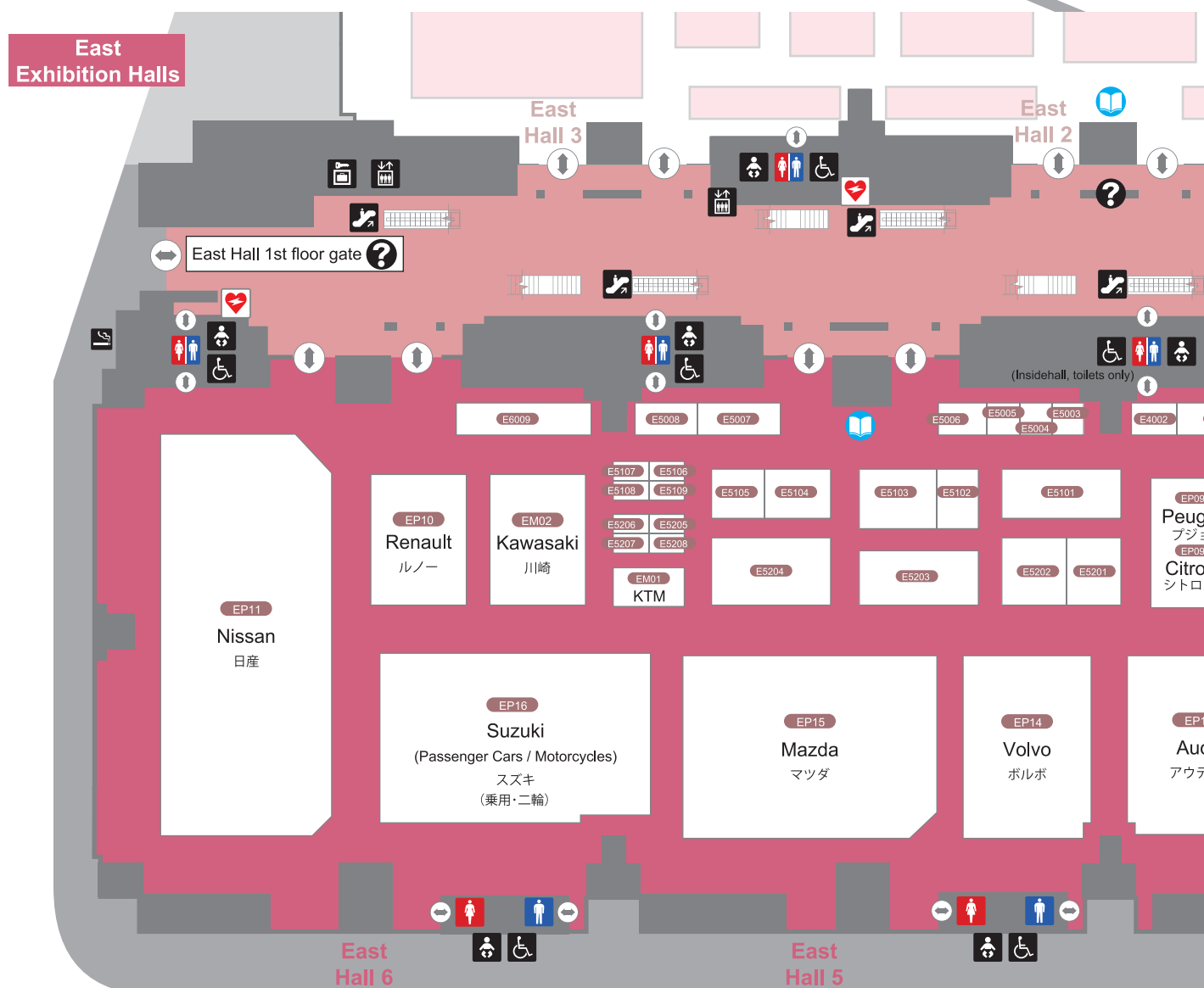
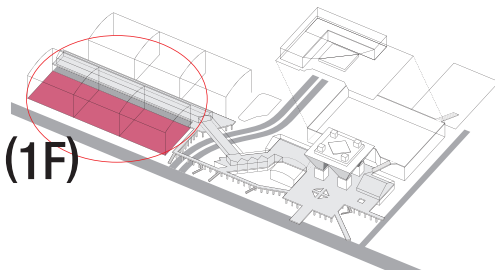
Mitsubishi Electric Corp.



East Exhibition Halls



EAST4-6 HALLS MAP (1F)



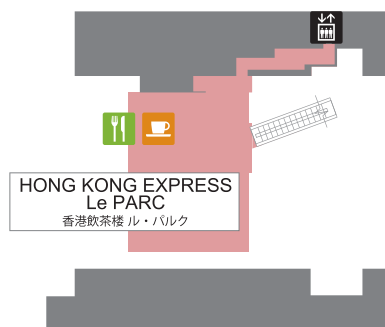
- | | | | |
|----|----------------------------|--|--|
| ? | インフォメーション Information | 授乳室 Nursery Room | レストラン・カフェ・休憩ゾーン Restaurant & Cafe, Rest Zone |
| 人 | 待ち合わせコーナー Meeting Point | コインロッカー Coin Lockers | コンビニエンスストア Convenience Store |
| エレ | エレベーター Elevator | 救護室 First Aid | オフィシャルグッズショップ Official Goods Shop |
| エス | エスカレーター Escalator | AED 自動体外式除細動機 AED/Automated External Defibrillator | 自動車ガイドブック販売所 Guide Book Stand |
| 化粧 | 化粧室 Restroom | 喫煙場所 Smoking Area | |
| 身障 | 身障者用施設 Accessible Facility | | |



■部品／機械器具 Parts, Machinery and Tools

| | | |
|-------|--|---|
| E4001 | ジヤトコ(株) | Jatco Ltd. |
| E4002 | 日信工業(株) | Nissin Kogyo Co., Ltd. |
| E5003 | スナップオン・ツールズ(株) | Snap-on Tools Japan K.K. |
| E5004 | Öhlins Racing AB Militec Corp. | |
| E5005 | (株)ヨロズ | Yorozu Corp. |
| E5006 | (株)エクセディ | Exedy Corp. |
| E5007 | 曙ブレーキ工業(株) | Akebono Brake Industry Co., Ltd. |
| E5008 | (株)アステア 大野ゴム工業(株) 3D Auto Protech(株) 西岡可鍛工業(株) 藤壺技研工業(株) 丸子警報器(株) やまと興業(株) (一社)日本自動車部品工業会 | Aster Co., Ltd. Ohno Rubber Industrial Co., Ltd. 3D Auto Protech Co., Ltd. Nishioka Malleable Iron Ind. co., Ltd. Fujitsubo Giken Kogyo Co., Ltd. Maruko Keihoki Co., Ltd. Yamato Industrial Co., Ltd. Japan Auto Parts Industries Association |
| E5101 | NTN(株) | NTN Corp. |
| E5102 | 日本発条(株) | NHK Spring Co., Ltd. |
| E5103 | 住友ゴム工業(株) | Sumitomo Rubber Industries, Ltd. |
| E5104 | 日本グッドイヤー(株) | Goodyear Japan Ltd. |
| E5105 | 横浜ゴム(株) | The Yokohama Rubber Co., Ltd. |
| E5106 | (株)松井製作所 | Matsui Universal Joint Corp. |
| E5107 | 富士機工(株) | Fuji Kiko Co., Ltd. |
| E5108 | 協和工業(株) | Kyowa Kogyo Co., Ltd. |
| E5109 | Hirschvogel Holding GmbH | |
| E5201 | 日本精工(株) | NSK Ltd. |
| E5202 | (株)ジェイテクト | JTEKT Corp. |
| E5203 | アイシン精機(株) アイシン高丘(株) アイシン化工(株) アイシン・エイ・ダブリュ(株) アイシン・エーアイ(株) (株)アドヴィックス | Aisin Seiki Co., Ltd. Aisin Takaoka Co., Ltd. Aisin Chemical Co., Ltd. Aisin AW Co., Ltd. Aisin AI Co., Ltd. Advics Co., Ltd. |
| E5204 | (株)ブリヂストン | Bridgestone Corp. |
| E5205 | (株)ワイピーシステム | YP System Co., Ltd. |
| E5206 | (株)レイズ | Rays Co., Ltd. |
| E5207 | 水戸工機(株) | Mito Tool Mfg. Co., Inc. |
| E5208 | 京都機械工具(株) | Kyoto Tool Co., Ltd. |
| E6009 | Schaeffler AG | |

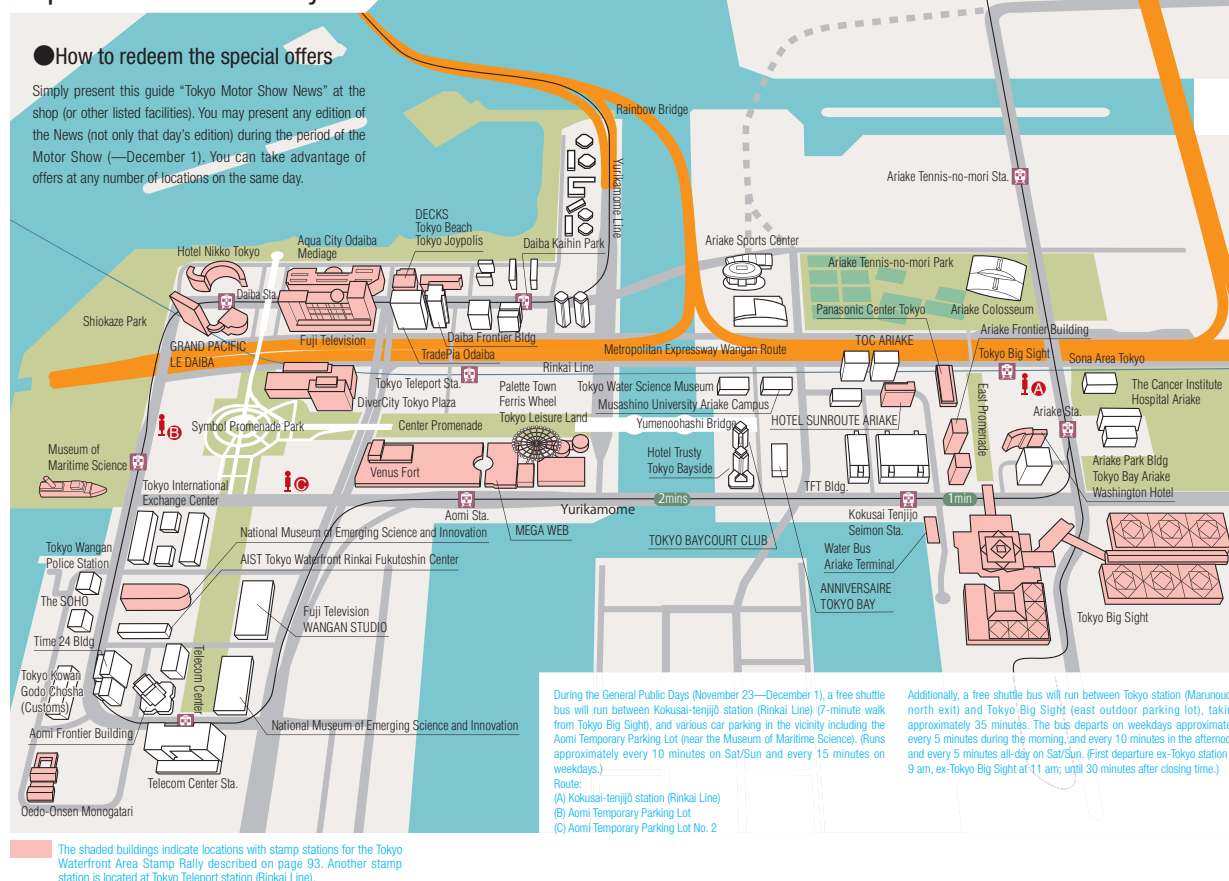
East Exhibition Halls



Things to Do in the Tokyo Waterfront City

Present this guide at any of the 20 listed facilities supporting the Tokyo Motor Show to receive a wide range of discounts

Map of the Waterfront City



There are plenty of things to do in Tokyo's fascinating Waterfront City

The Waterfront City location of Tokyo Big Sight, the Tokyo motor show venue, has a surprisingly long history. It includes the Daiba district, named after the cannon emplacements built here at the end of the Edo period as a defense against "black ships" arriving from the West to force the country to open up to trade after a prolonged isolation.

Of the 11 emplacements originally proposed, the No. 3 and No. 6 batteries have retained their former appearance. The No. 3 battery is now known as Daiba Park and is open to the public.

In 1991, Fuji Television finished relocating its

headquarters here, and with the appointment of Shintaro Ishihara to Governor of Tokyo in 1999, development progressed quickly. Today, it is a trendy district, home to large-scale amusement and shopping facilities. The area will also play a major role during the 2020 Tokyo Summer Olympics.

As supporters of Tokyo Motor Show 2013, 20 facilities in the Waterfront City are offering show visitors a range of special deals and await your arrival. All you need to do is present this guide. So after taking in the Tokyo motor show, why not head down to one of these facilities? You won't be disappointed.



1 Hotel Nikko Tokyo 10% discount at restaurants and bars

Directly accessible from Daiba station, Hotel Nikko Tokyo looks like an urban resort with balconies outside all its rooms. Restaurants and a bar provide panoramic views of major Tokyo landmarks, such as Rainbow Bridge and Tokyo Tower. Show this guide and receive a 10% discount on food and drink at any of the hotel's 10 restaurants and bars. Experience the elegant luxury of the Hotel Nikko Tokyo.

Hours Lunch: 11:30am to 2:30pm / Dinner: 5:30pm to 9:30pm
*Hours may vary

Access Direct access from Daiba station (Yurikamome)
10-minute walk from Tokyo Teleport station (Rinkai Line)



2 AQUA CITY ODAIBA Free coupons for use at participating stores

Right next to Odaiba Seaside Park, Aqua City Odaiba is a large shopping complex, ideally situated with views across the Statue of Liberty and Rainbow Bridge to central Tokyo. During the Tokyo Motor Show, present your admission ticket or this guide at the 3rd floor information counter (between 11am and 9pm) and receive a "Nice Coupon" redeemable at 66 stores. Come and visit this "resort island" in the middle of the city.

Hours Stores, services and food court: 11am to 9pm
Restaurants and cafés: 11am to 11pm (hours may vary)

Access 1-minute walk from Daiba station (Yurikamome)
6-minute walk from Tokyo Teleport station (Rinkai Line)



3 DECKS Tokyo Beach Receive a "DECKS Premium Card"

You could spend the entire day at this complex with the rich entertainment offerings of the Tokyo Joypolis theme park, Japan's first Legoland Discovery Center and Madame Tussauds Tokyo. Dine at a seaside restaurant with Rainbow Bridge and Tokyo Tower right before your eyes and do some shopping perhaps. Take this guide to the 3rd floor information counter in the Seaside Mall and receive a "DECKS Premium Card" entitling you to special deals at around 60 stores inside the complex.

Hours 11am to 9pm / Restaurants: 11am to 11pm (5F), 11am to midnight (6F)

Access 2-minute walk from Odaiba-kaihinkōen station (Yurikamome)
5-minute walk from Tokyo Teleport station (Rinkai Line)



4 Hotel Grand Pacific LE DAIBA 10% discount on meals

Under the theme "Vacances et Élégance," hotel Grand Pacific Le Daiba creates a sense of French elegance. Present this guide at Dining & Bar "Star Road" on the top floor (30th) of the hotel and receive a 10% discount on meals for up to 8 people. Enjoy dinner in style while looking out at Rainbow Bridge and the illuminated Tokyo Tower.

Hours Dinner: 5:30pm to 9pm

Access Direct access from Daiba station (Yurikamome)
10-minute walk from Tokyo Teleport station (Rinkai Line)



5 Fuji Television Spherical Observation Room 20% discount on admissions

Fuji Television's headquarters houses a spherical observation room, "Hachitama," on the 25th floor. The observation room is 123.45m above ground and gives a 270-degree panorama of the Tokyo Waterfront City. You can also visit "Mezama Sky" combined into the set of popular morning TV program "Mezamashi TV". Autographs of guests who have appeared on the live program are also on display. Show this guide and enjoy the views and exhibit at a special rate.

Hours 10am to 6pm ("Mezama Sky" closes at 5pm)
Open every day except Monday

Access 3-minute walk from Daiba station (Yurikamome)
5-minute walk from Tokyo Teleport station (Rinkai Line)



6 Daiba Frontier Building 2F Have a mojito at CRUX Kafeo

European resort café Crux Kafeo follows the theme of the beautiful Aegean Sea, known in the 16th century as a junction of knowledge. Show the Tokyo Motor Show News at the café when you buy a mojito (a rum-based cocktail; 600 yen) and all subsequent mojitos will be half price. You may also like to order a light meal to go with your drink. The European Curry (700 yen) and Pizza Margherita (390 yen) are popular among all ages.

Hours Mon-Fri: 7:30am to 7pm / Sat: 12pm to 6pm
(Closed Sunday and holidays. We also take party reservations)
*See website for details

Access 2-minute walk from Odaiba-kaihinkōen station (Yurikamome)
2-minute walk from Tokyo Teleport station (Rinkai Line)



7 DiverCity Tokyo Plaza Free coupons for special offers

DiverCity Tokyo Plaza, with an unmissable full-scale (18m) Gundam statue standing out front, is a commercial complex housing a large number of clothing stores, entertainment facilities, restaurants and other eateries. Bring this guide to the Information Desk on the 3rd floor (between 10am and 9pm) and receive special coupons entitling you to special deals and services at shops, restaurants and other facilities inside the complex. This is the perfect time to visit!

Hours Shopping/services: 10am to 9pm / Food Court: 10am to 10pm / Restaurants: 11am to 11pm
*Hours may vary

Access 5-minute walk from Daiba station (Yurikamome)
3-minute walk from Tokyo Teleport station (Rinkai Line)

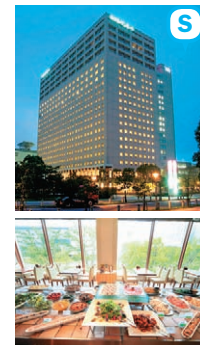


8 Hotel Sunroute Ariake "Sosai Patio" 10% discount on lunch and dinner

Restaurant "Sosai Patio", located inside Hotel Sunroute Ariake just a short distance from Tokyo Big Sight, is proud of its cordial service, fusion of Western and Japanese cuisine and handcrafted beer delivered straight from its own brewery in Yokohama. Present this guide at the restaurant during the Tokyo Motor Show and receive a 10% discount on lunch and dinner. Lunch is buffet style and sure to satisfy!

Hours Breakfast: 6am to 10:30am (L.O. 10am) / Lunch: 11:30am to 2:30pm (L.O. 2pm) / Dinner: 5pm to 10:30pm (L.O. 9:30pm)

Access 3-minute walk from Kokusai-tenjijō-seimon station (Yurikamome)
3-minute walk from Kokusai-tenjijō station (Rinkai Line)



9 Panasonic Center Tokyo 1 free soft drink

Visitors to Panasonic Center Tokyo can try out Panasonic's solutions for realizing a comfortable lifestyle and new products even before they are released. Facilities include RiSuPia, a hands-on museum letting you experience the fascination of science and mathematics, and café E-FEEL. Show this guide at E-FEEL during the Tokyo Motor Show and receive a free soft drink (coffee, tea, azuki bean tea, orange juice or vegetable juice). By all means stop by.

Hours 10am to 6pm (last admission to RiSuPia is 5pm)
Closed Monday

Access 3-minute walk from Ariake station (Yurikamome)
2-minute walk from Kokusai-tenjijō station (Rinkai Line)



10 VenusFort Free "Gourmet Coupons"

VenusFort is a hybrid shopping mall resembling a 17th-18th century village in southern France or northern Italy, its attractive "streets" lined with many stores and restaurants. Present this guide at the information counter on the 2nd floor (between 11am and 9pm) and receive a free "Gourmet Coupons" redeemable at cafés and restaurants. If you decide to drop by, the outlet stores on the 3rd floor are also worth a visit.

Hours Stores: 11am to 9pm / Restaurants: 11am to 11pm (L.O. 10pm)

Access Direct access from Aomi station (Yurikamome)
3-minute walk from Tokyo Teleport station (Rinkai Line)



11 Tokyo Baycourt Club Hotel & Spa Resort Discounts and free drinks at "Ristorante Ozio"

Show this guide at Italian restaurant "Ristorante Ozio", inside the members-only hotel Tokyo Baycourt Club, and receive (1) a 20% discount on lunch courses (3,000 yen, 5,000 yen and 7,000 yen courses), (2) 1 free non-alcoholic cocktail with the dessert buffet (2,000 yen), or (3) 1 free glass of champagne with dinner. Valid until Friday, December 20, 2013. Reservations required.



Hours Breakfast: 7am to 10:30am (L.O.) / Lunch: 11:30am to 2pm (L.O., Sat/Sun: 2:30pm) / Dessert buffet (Mon-Fri): 3pm to 5pm / Dinner: 5:30pm to 9:30pm (L.O.) *Reservations required

Access 6-minute walk from Kokusai-tenji-jō-seimon station (Yurikamome)
10-minute walk from Kokusai-tenji-jō station (Rinkai Line)

*Prices include consumption tax. A 10% service charge will be added.

12 Hotel Trusty Tokyo Bayside 20% discount on lunch and dinner at "Lounge Cuore"

The operators of the Tokyo Baycourt Club, Resorttrust, Inc., also run Hotel Trusty Tokyo Bayside. "Lounge Cuore" is an open space where you can sit down and unwind or stand at the bar. Despite its sophisticated atmosphere, prices are reasonable with lunch courses starting at 1,300 yen. Show this guide and receive a 20% discount on lunch or dinner.



Hours Lunch: 11:30am to 2pm / Dinner: 5pm to 11pm (L.O. food – 10pm, drink – 10:30pm)

Access 6-minute walk from Kokusai-tenji-jō-seimon station (Yurikamome)
10-minute walk from Kokusai-tenji-jō station (Rinkai Line)

13 TFT Building (Wanza Ariake Bay Mall) 1 free drink and more

● "Nomokuo": Medium draft beer, sour or oolong tea ● "Funachu", "Kaminari Usagi", "Hozukiya": Glass of beer or soft drink ● "Suien": Medium draft beer or soft drink (for customers arriving by 6pm) ● "Tyoujukan Shubo", "Ciao": Soft drink ■ "Takerokusuke Koubou": Free prawn crackers with alcoholic drinks ordered after 6pm (until 8pm) ■ "Pronto": Free edamame beans with alcoholic drinks ordered after 5:30pm (bar time). That fatigue will disappear in no time!



Hours Lunch: 11am to 3pm / Dinner: 5pm to 11pm
*Hours may vary

Access 1-minute walk from Kokusai-tenji-jō-seimon station (Yurikamome)
5-minute walk from Kokusai-tenji-jō station (Rinkai Line)

14 Ariake Frontier Building Special deals on drinks and meals

Make the most of the following special deals at the Ariake Frontier Building, located close to Tokyo Big Sight: ● Izakaya "Chimney": 1 free drink up to the price of a medium beer for up to 6 people (limited to bills from 2,500 yen/person) ● Convenience store "Sunkus": 20 yen off 100 yen coffee (Original Taste or Iced Coffee) for the first 1,000 customers ● Chinese restaurant "Shunka Shujitsu": 10% discount on food and drink for customers arriving by 6:30pm.



Hours ● "Chimney" – Lunch (Mon-Fri): 11:30am to 3pm / Dinner: 3pm to 11pm (4pm to 11pm on holidays) ● "Sunkus" – Open 24 hours ● "Shunka Shujitsu" – Lunch: 11:30am to 3pm / Dinner: 5pm to 10:30pm

Access 2-minute walk from Kokusai-tenji-jō-seimon station (Yurikamome)
3-minute walk from Kokusai-tenji-jō station (Rinkai Line)

15 Tokyo Bay Ariake Washington Hotel 10% discount on dinner bills

Discounts are available at restaurants inside Tokyo Bay Ariake Washington Hotel, located directly opposite Tokyo Big Sight, the motor show venue. "Georgetown" on the 1st floor serves a 90-minute buffet with more than 20 dishes, including steak and sushi. At "China Grill Madam Xenlon", on the 20th floor, enjoy Chinese cuisine New York style. Both restaurants will take 10% off your dinner bill, so please drop in after the show.



Hours "Georgetown" (1F) – 5pm to 9:30pm (last seating 9pm)
"Madam Xenlon" (20F) – 5pm to 10pm (L.O. 9:30pm)
*Discount does not apply to Madam Xenlon buffet meals

Access 2-minute walk from Kokusai-tenji-jō-seimon station (Yurikamome)
2-minute walk from Kokusai-tenji-jō station (Rinkai Line)

16 Ariake Park Building 1 free drink after 5pm

Present this guide at any of the following restaurants and receive 1 free drink: ● "Tagui": Draft beer or soft drink ● "Rakuen": Glass of beer or iced oolong tea ● "Nakamura Koumei Ariake", "Maharani", "Al Porto": Glass of beer or soft drink ● "Mexico": Soft drink. At family restaurant "Coco's", children of elementary school age or younger can use the drink bar for free.



Hours Lunch: 11am to 3pm / Dinner: 5pm to 11pm
*Hours may vary

Access 2-minute walk from Ariake station (Yurikamome)
2-minute walk from Kokusai-tenji-jō station (Rinkai Line)

17 Al Porto Tokyo Big Sight 1 free drink with dinner

Chief Mamoru Kataoka runs a popular restaurant in Tokyo's Nishi-Azabu district and has now opened a new restaurant on the 8th floor at Tokyo Big Sight. Besides lunch, Al Porto Tokyo Big Sight serves dinner and caters for parties with splendid night views across the bay area. Dinner customers who show this guide will receive 1 free drink. Al Porto is worth visiting to taste its creatively delicious Italian cuisine. An autumn wine fair will also be in progress during the motor show (Nov. 12 to 30).



Hours Lunch: 11am to 4pm (L.O. 3pm)
Dinner: 5pm to 10pm (L.O. 9pm)
*The above are extended hours for the duration of the motor show

Access 8th floor of the Conference Tower, Tokyo Big Sight
(Take the elevator from the 1st floor)

18 National Museum of Emerging Science and Innovation Permanent exhibition discounts

The National Museum of Emerging Science and Innovation (Miraikan), headed by astronaut Mamoru Mohri, makes it easy to learn about cutting-edge science and technology. For people of all ages, the museum forms a link between science and society through special exhibitions, events, planetarium presentations and other activities. Show this guide to reduce admission fees (for the permanent exhibition) from 600 yen to 480 yen for adults, and from 200 yen to 160 yen (free admission on Saturday) for persons 18 or under. This discount cannot be used with other offers.



Hours 10am to 5pm (last admission 30 min. before closing)
Closed Tuesday

Access 5-minute walk from Fune-no-kagakukan station, 4-minute walk from Telecom Center station (Yurikamome); 5-minute walk from Tokyo Teiport station (Rinkai Line)

19 Oedo Onsen Monogatari Discount on admissions

Japan's first onsen (natural hot spring) theme park, Oedo Onsen Monogatari opened in 2003. Drawn from a depth of 1,400m, the strong sodium chloride spring is effective for nerve, muscle and joint pain, fatigue, poor circulation and other ailments. Oedo Onsen Monogatari will provide discount coupons worth 200 yen to adults, and 600 yen to children (aged 4 to elementary school age) between Nov. 23 and Dec. 1. At the end of the day, why not soothe your tired body bathing in a hot spring?



Hours 11am to 9am (last admission 7am)
*Late night surcharge (from 2am): 1,700 yen

Access 2-minute walk from Telecom Center station (Yurikamome)

20 Telecom Center Building Observation deck and restaurant special deals

Consider visiting the Telecom Center Building, a distinctive building with east and west towers. The following special deals are available: ● 21st floor observation deck: 100 yen off admission (cannot be used with other offers) ● Restaurant "Precious Tokyo Bay": 1 free first drink ● Cafeteria "1 House": (1) Lunch – 1 free side dish of your choice, (2) Dinner – 1 glass of beer.



Hours ● Observation deck: 3pm to 9pm (Tue-Fri), 11am to 9pm (Sat, Sun and holidays) ● "Precious Tokyo Bay": 5:30pm to 10pm (closed Sun/Mon) ● "1 House": Lunch – 11:30am to 1:30pm / Dinner – 5:30pm to 9pm

Access 1-minute walk from Telecom Center station (Yurikamome)

If you had fun at the 43rd Tokyo Motor Show.....

Enjoy Even More Cars at the Odaiba Motor Festival

The hottest racing machines on display

The "Cirque de Mobi" and family motorcycle classes were among a number of exciting events that took place on November 16 to 17. Plenty of events are also planned for the weekends of November 23-24 and November 30 to December 1.

■ Nov. 23 (Sat)

The Japan Motor Fair at Mega Web will feature demo runs, test rides and a rally talk event involving racers who compete in the TRD Rally Challenge and the All-Japan Rally Championship (10 cars are expected to take part driven by names like Nutahara, Katsuta, Yanagisawa and Hasegawa). Also planned are demo runs by Nobuhiro "Monster" Tajima and Show Aikawa.

■ Nov. 24 (Sun)

At Mega Web, the Itasha/Voice Actor Event and Ride One Parade will feature appearances by voice actors and a parade of itasha (anime-decorated cars) created through tie-ups with popular anime productions. On Center Promenade, some 80 itasha will gather for the "Ita G Festa", part of the Odaiba Motor Festival.

■ Nov. 30 (Sat) to Dec. 1 (Sun)

At Mega Web, a panel discussion and demonstration featuring three types of mobility vehicles, including ultra-compact mobility and personal vehicles, will be held. On Center Promenade, a Japan Motor Fair involving 50 custom cars will take place.



Engineer experience event

Be an engineer for the day! Between 10am and 5pm from November 23 (Sat) to 25 (Mon) and November 27 (Wed) to December 1 (Sun), the National Museum of Emerging Science and Innovation (Miraikan) lets you experience being an automotive service engineer. The program allows you to assemble and then test drive a one-person electric vehicle (EV) called a "Pius", as well as try jobs that a servicing engineer of the future might perform in a computerized diagnostics corner.

Open to elementary to high school age children, the event allows participants to learn about how EVs work and gain pleasure from actually driving a car they have assembled themselves. To participate in the assembly and test drive experience, sign up on the day (first-come first-served).



Working vehicles exhibit



On November 30 (Sat) and December 1 (Sun), a large number of working and rare vehicles adored by children will gather along East Promenade. Vehicles and motorcycles used by the police and firefighters, or along the urban expressway, for example, will make an appearance.

Odaiba Rainbow Fireworks 2013

A 10-minute fireworks display will be put on in the Odaiba district from 7pm to 7:10pm every Saturday from November 23 until the end of the year. Launched from the sea near the Statue of Liberty, the fireworks are visible from across the Tokyo Waterfront City area. But perhaps the best

viewing positions would be Decks Tokyo Beach or Aqua City Odaiba, with Rainbow Bridge as a backdrop. The colors lighting up a clear night sky in winter create an extra-special atmosphere, different again to fireworks displays enjoyed in summer.



Experience a future that doesn't exist yet, a future shaped by friendly competition

TOKYO MOTOR SHOW Event Map

A host of events have been organized to add to the joy and excitement of your experience. Check out the Odaiba Motor Festival, passenger car test rides with professional drivers, motorcycle test rides, tours of the Tokyo Motor Show given by automotive journalists, and more.

1 Test ride a car or bike that you wish was yours

Test rides are one of the most popular events of the Tokyo Motor Show. The passenger car test ride program allows visitors to ride in the latest domestic and imported vehicle models, even

including rarely spotted sports cars. The cars are driven by professionals (cooperation: Japan Motorsport Promotion Organization), enabling participants a full experience of a vehicle's

capabilities. There is also a motorcycle test ride program featuring a line-up of the latest domestic and imported bikes. Come along for a test ride.

● Passenger Car Test Rides with Professional Drivers

The passenger car test ride program allows visitors to truly appreciate a car's performance on a purpose-built course. Riding as passengers in the latest models of the different brands, participants gain first-hand experience of a car's capabilities and explanations about their features. Cars are driven by members of the Automobile Journalists Association of Japan (AJAJ) and driving instructors. Sign up on the day.

Vehicle List (Passenger Cars)

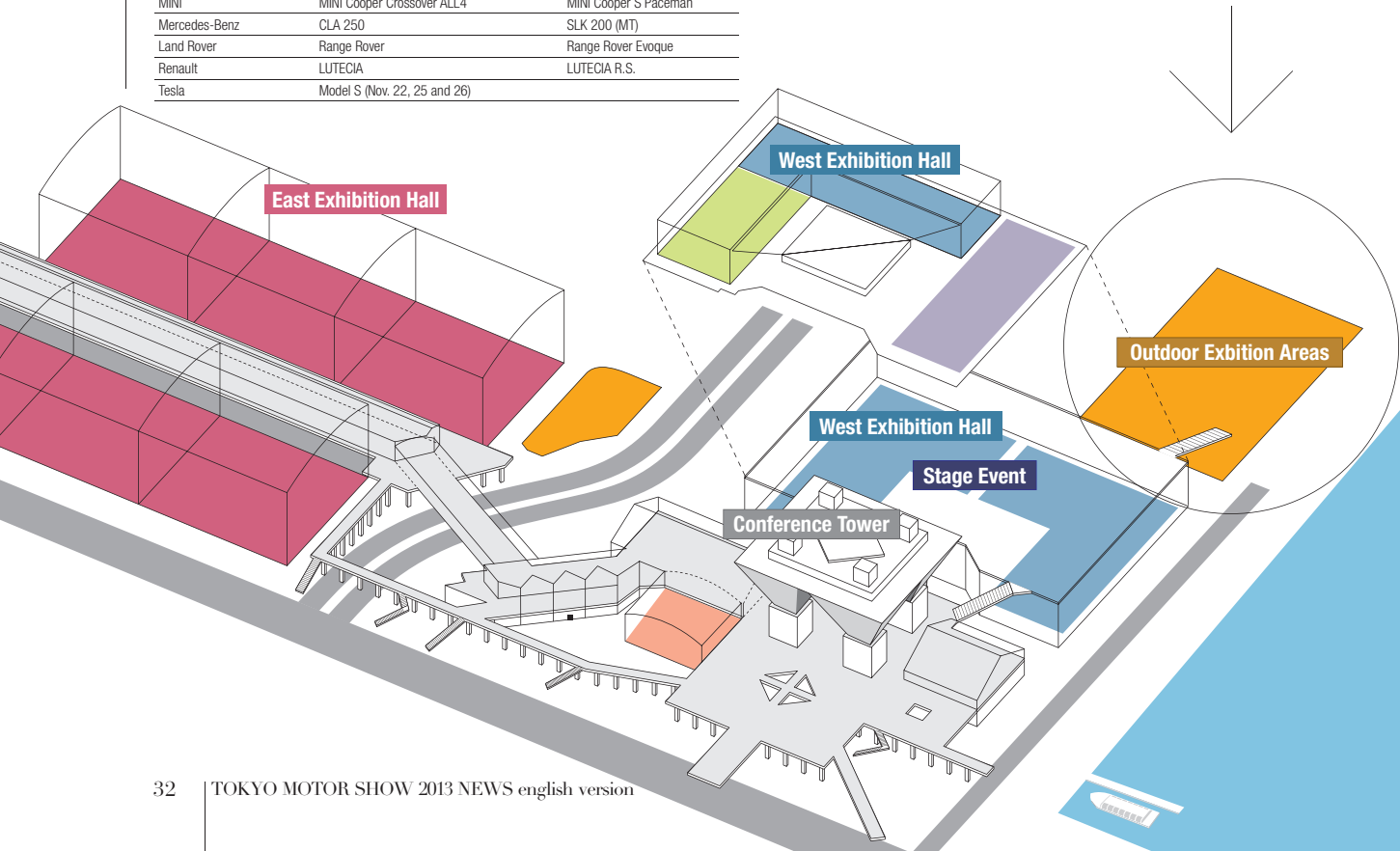
| | | |
|---------------|------------------------------|-----------------------------|
| Suzuki | Swift XD-DJE | WAGON R STINGRAY |
| Subaru | BRZ tS | FORESTER 2.0 XT EyeSight |
| Toyota | 86 | CROWN MAJESTA |
| Nissan | Fairlady Z NISMO | Fairlady Z NISMO |
| Honda | Fit RS | |
| Mazda | Atenza Sedan XD L Package | Atenza Wagon XD L Package |
| Mitsubishi | Outlander PHEV | DELICA D:5 |
| Lexus | IS350 "F SPORT" | IS300h "F SPORT" |
| Audi | A3 Sportback | RS6 Avant |
| Citroën | Citroën DS3 Cabrio (MT) | Citroën DS4 Sport Chic (MT) |
| Jaguar | F Type | XJ |
| BMW | 523d | ActiveHybrid 3 |
| Volkswagen | Golf GTI | Polo BlueGT |
| Peugeot | PEUGEOT RCZ (LHD/MT) | PEUGEOT 208 GTi (MT) |
| Porsche | Cayenne S Hybrid | |
| Volvo | V40 CROSS COUNTRY T5 AWD | V40 T5 R-DESIGN |
| MINI | MINI Cooper Crossover ALL4 | MINI Cooper S Paceman |
| Mercedes-Benz | CLA 250 | SLK 200 (MT) |
| Land Rover | Range Rover | Range Rover Evoque |
| Renault | LUTECIA | LUTECIA R.S. |
| Tesla | Model S (Nov. 22, 25 and 26) | |

● Motorcycle Test Rides

The motorcycle test ride program, held on a purpose-built course, allows participants to take the handles of a latest model of one of the motorcycle brands for a test ride and appreciate its performance. A special course for beginners has also been set up in the test ride venue, making it easy for people in that category to take part. Sign up on the day.

Vehicle List (Motorcycles)

| |
|---|
| Kawasaki: ZRX1200 DAEG, W800, Ninja 400, Ninja 250, Z250 |
| Suzuki: GSR250, GSR400 ABS, GLADIUS 400 ABS, SKY WAVE 400 Limited ABS, SKY WAVE 650LX, V-Strom 650 ABS, GSR 750 ABS |
| Honda: GOLDWING F6B, CTX700 Dual Clutch Transmission, CBR400R (ABS), CB400F (ABS), FORZA Si (ABS), CBR125R, GROM, GIORNO, ZOOMER, CROSS CLUB, Sh mode |
| Yamaha: VMAX, XP500A TMAX, BOLT, DragStar, SR400, TRICKER XG250, MAJESTY S XC155, CYGNUS X XC125SR |
| KTM: 390 DUKE, 390 DUKE, 200 DUKE, 125 DUKE |
| BMW: F 700 GS, F 800 GT, S 1000 RR, R 1200 GS, K 1600 GTL, C 600 Sport, C 650 GT |





2

Stage events

Fuji Television and Tokyo FM will be hosting live performances and other events on the stage in the



1st-floor atrium of the West Exhibition Hall. ● Nov. 23 (Sat) 11am–12pm: Discussion “8th Discussion on Vehicle Tax” ● Nov. 23 (Sat) 1:30pm–4pm: Talk Show “2013–2014 Car of the Year final selection and presentation” and “Ogiyohagi’s No Car No Life!” ● Nov. 24 (Sun) 10:30am–12:30pm / Nov. 30 (Sat) 10:30am–12:30pm / Dec. 1 (Sun) 10–11:30am: SMC Kids’ Workshop “Make a Mabuchi Motor-Driven Wooden Car” ● Nov. 24 (Sun) 1:30–3pm: Chie Ayado talk and performance ● Nov. 25 (Mon) 1–1:30pm (schedule): Next-Generation Unit X21 Special Show / Nov. 26

(Tue) 12–12:30pm (schedule) / Nov. 27 (Wed) 1–1:30pm (schedule): Idling!!! Special Show / Nov. 26 (Tue) 1–1:30pm (schedule): Kazuki Nakajima Super Formula “Looking Back on the Fierce Battles of the 2013 Season” / Nov. 28 (Thu) 1–1:40pm (schedule): Public recording for TV show “Premier Hangout” / Nov. 29 (Fri) 11:30am–12pm (schedule): The 43rd Tokyo Motor Show 2013 Supporter Family “Car Enthusiasts” Special Show ● Nov. 25 (Mon)–28 (Thu) 3–5pm (schedule): TOKYO FM live public broadcast ● Dec. 1 (Sun) 12–1pm/3–4pm: Eco-drive show



3

Symposiums / Conferences

Symposiums on a variety of automotive-related themes will be held in the Conference Tower. Scheduled programs include the Tokyo Motor Show Symposiums 2013 (TMS) on the 6th floor, as special side events hosted by the show’s organizers, and international symposiums forming the conference portion of the organizers’ themed project, “Smart Mobility City 2013 (SMC),” on the 1st, 6th and 7th floors.

Entry to Tokyo Motor Show Symposiums 2013 is free (you will need tickets to the Tokyo Motor Show) but many require registration in advance. There will be 7 symposiums on themes like automobile safety, drunk driving, road travel and ITS. Smart Mobility City 2013 consists of 8 programs, including international symposiums, advanced technology seminars and kids’ workshops.



Nov. 23 (Sat)–24 (Sun) ▶ 10:20am to 4:10pm

SMC Kids’ Workshop (1st-floor, Panasonic Center Tokyo)

**Panasonic Kids’ School
Hybrid Car Construction Workshop**
Panasonic (Reservations required)

Nov. 23 (Sat) ▶ 10:30am to 5 pm

**SMC Kids’ Workshop (Meeting Room 102)
Nissan Waku-Waku Eco School**

Nissan Motor Company
(Reservations required)
Also held Nov. 24 (Sun) 10:30am to 3:30pm

Nov. 24 (Sun) ▶ 10:30am to 4pm

“Changing life through new technologies”

Association for the Promotion of Electric Vehicles / The Yomiuri Shimbun (morning)
Ministry of Land, Infrastructure, Transport and Tourism / The Yomiuri Shimbun (afternoon)
(Details for participation to be notified via The Yomiuri Shimbun and the Internet)

Nov. 25 (Mon) ▶ 10:30am to 4:50pm

**SMC International Symposium Program I
“Connected vehicles for enhancing safety and reassurance — Possibilities of advanced driver assistance systems”**

Nov. 26 (Tue) ▶ 1pm to 4:30pm

TMS Symposium “8th Japan ITS Promotion Forum : Open ITS to the Next”
ITS Japan
(Priority to advance registrations)

Nov. 26 (Tue) ▶ 1pm to 4:30pm

TMS Symposium “The beginning of the future transport business ‘A new business stream by the cooperation of Safety and Security × Health care × ICT”

Road Transport Bureau, Ministry of Land, Infrastructure, Transport and Tourism

Nov. 27 (Wed) ▶ 1:30pm to 5pm

TMS Symposium “ITS Seminar in Tokyo: Tokyo 2020, Considering Urban Road Transport — the Future of ITS”

ITS Japan / ITS Center, The University of Tokyo
(Priority to advance registrations)

Nov. 28 (Thu) ▶ 11am to 4:30pm

**SMC International Symposium Program II
“Future societies, future mobilities”**

Toyota Motor Corporation (special support)
(Tickets available at TMS official online ticket service “e-tix”)

Nov. 28 (Thu) ▶ 1pm to 3:30pm

TMS Symposium “Symposium on Anti-Drunk Driving”
Japan Automobile Manufacturers Association, Inc.
(Register on the day, first-come first-served)

Nov. 28 (Thu) ▶ 1:30pm to 4:40pm

**SMC Advanced Technology Seminar
“Fuel Cell Seminar in Tokyo”**

Agency for Natural Resources and Energy, Ministry of Economy, Trade and Industry

Nov. 29 (Fri) ▶ 2pm to 5pm

TMS Symposium “Create Japan’s next-generation automobile society through the eyes of woman — Better relationships between automobiles and women”

Pink Wheel Project / Ministry of Economy, Trade and Industry

Nov. 30 (Sat) ▶ 3:30pm to 5:30pm

TMS Symposium “Stroll with a car: you’ll be a “car-tablist” (car travel enthusiast) from today!”

Nippon Road Destinations
(Priority to advance registrations)

Dec. 1 (Sun) ▶ 1pm to 4pm

TMS Symposium “14th Automobile Safety Symposium”

Road Transport Bureau, Ministry of Land, Infrastructure, Transport and Tourism
(Priority to advance registrations)



4 Tours of the Tokyo Motor Show with automotive journalists (AJAJ)

From November 25 (Mon) to 29 (Fri), members of the Automobile Journalists Association of Japan (AJAJ) will be available to serve as guides on paid tours, providing participants an expert's perspective on the Tokyo Motor Show and the appeal of automobiles. There are two courses: a "standard course" for people who want to see all the highlights of the Tokyo Motor Show, and a "course for car lovers" for people who want to experience the detailed ins and outs of the Tokyo Motor Show and automobiles. To participate, you will need to purchase an "Admission Ticket bundled with Event Participation Voucher" from the TMS official online ticket service "e-tix".



Participants enjoy special treatment that general visitors miss out on, like having the hatch door of a car opened for them

Explanations are provided by both journalists and booth attendants, allowing for greater detail and ease of understanding



Expected AJAJ Tour Guides

Hajime Aida, Yuko Iida, Shigeyuki Ishikawa, Makiteru Ishikawa, Yuki Imai, Tatsuya Ohtani, Goro Okazaki, Kouichiro Okamoto, Yukinaga Kase, Hideaki Kataoka, Manabu Kawaguchi, Yumi Kawabata, Tatsuya Kushima, Takahiro Kudo, Kiyoshi Komoda, Akifumi Kondo, Satoshi Saito, Shinsuke Saito, Kenichi Suzuki, Naoya Suzuki, Hideyuki Takane, Kenji Takahashi, Seikan Takayama, Kei Takeoka, Takumi Chiba, Takahito Nakamura, Naoto Nishimura, Rei Hashimoto, Etsuro Fushiki, Tomoko Fujishima, Tamotsu Horikoshi, Hiroshi Matsushita, Hideshi Matsuda, Hiroyuki Manabe, Akiko Marumo, Makoto Maruyama, Kenji Momota, Kazunori Morioka, Osamu Morikawa, Youichi Morohoshi, Yumi Yoshida
(Japanese syllabary order, honorifics omitted)



5 World Food Cup

Presented by Fuji Television, as it was in 2011, World Food Cup is a food court set up in front of the purpose-built test ride course in the Outdoor Exhibition Space. Catering trucks selling distinctive cuisine from regions around the world will be vying to become the most popular stall, as voted by visitors during the show. In 2011, the Sudan stall won with more than 32,000 votes. With more regions added this year, we can expect some heated competition.



6 Soap Box Derby

One of the hands-on events during the Tokyo Motor Show will be the daily soap box car mockup crafting and time trials held in West Hall 3. The program is mainly for adult-accompanied children of elementary school age. The first half of each 90-minute session consists of a classroom-style workshop with children assembling a wooden do-it-yourself mockup car kit. In the second 45 minutes, they pit their cars, fitted with measuring instruments, against each other in time trials on a course about 10m long.

Real soap box cars and explanatory panels will also be on display. Sign up at the venue on the day on a first-come first-served basis. (The participation fee will be around 1,000 yen.)



7 Tomica Corner



The toy car exhibition and retail corner sponsored by Tomy Co., Ltd. has been a hit with children ever since the 35th Tokyo Motor Show in 2001. As usual, Tokyo Motor Show Commemorative Model Tomica cars will be available for purchase (680 yen, incl. tax). There are 12 models in total—8 passenger and 4 commercial vehicles. Dream Tomica (630–730 yen, incl. tax) and Disney Motors (780 yen, incl. tax) series will also be on sale.

BRIDGESTONE
あなたと、つぎの景色へ

新次元の 止まり方へ。

※北海道・東北・関東
5都市での装着率
12年連続
No.1
スタッドレス

BLIZZAK VRX

※2013年1月8日～2013年1月31日にかけて、札幌市、旭川市、青森市、盛岡市、秋田市の5地区において、二段無作為抽出法により抽出された乗用車(含む軽)を保有している一般世帯を直接訪問して、乗用車の装着スタッドレス銘柄を調査。株式会社ブリヂストンが第三者の調査会社に委託して実施。

株式会社ブリヂストン
[ブリヂストンお客様相談室] フリーダイヤル0120-39-2936
受付時間:月～金(祝日・当社指定休日は除く)9:00～17:00
月に一度は、空気圧の点検を!

www.bridgestone.co.jp

東5ホールでお待ちしております。

ダンロップ低燃費タイヤ
3年連続! No.1
全国カー用品量販店上位2社での販売本数
※日本能率協会総合研究所調べ

NEW
VEURO VE303
LE MANS 4
エナセーブ PREMIUM
エナセーブ EC202
エナセーブ RV503
UPGRADE
エナセーブ 97

ダンロップの低燃費タイヤ、フルラインアップで登場。

世界初「100%石油外天然資源タイヤ」いよいよダンロップから発売。

エナセーブ

※合成ゴムが主流になって以降(当社調べ)

DUNLOP 月に一度は空気圧の点検を! ☎ 0120-39-2788 <http://tyre.dunlop.co.jp/>

ひとつになる。

損保ジャパンと日本興亜損保は、関係当局の認可等を前提として、2014年9月1日に合併し、「損保ジャパン日本興亜」となります。

損保ジャパン 日本興亜損保

PS3

GT6

GRAN TURISMO® 6
THE REAL DRIVING SIMULATOR

PlayStation®3専用ソフトウェア『グランツーリスモ6』
西展示棟 アトリウムにて
シリーズ最新作が発売に先駆けて体験できます。

*GT、GT6、GT Sport and "PlayStation" are registered trademarks of Sony Computer Entertainment Inc. © Sony Computer Entertainment Inc.

トミカ **TAKARA TOMY**

〈出展内容〉
モーターショー開催記念トミカ販売・大ジオラマ・ドリームトミカ、ディズニーモーターズ先行販売 等

© TOMY

Asahi
ASAHI BEER

Enjoy great dry taste with Creamy Foam,
Zero Calorie*, Zero Carb.*
*Nutrition Labelling Systems in Japan

NEW Asahi DRY ZERO

Asahi Breweries, Ltd. supports drinking responsibly.

Non-alcoholic © This product was developed for drinking by people over 20. Recycle empty cans. **ASAHI BREWERIES, LTD.**

電子マネーは **QUICKPAY™!**
Speedpass+

クイックペイが使えるお店で利用できます。

ゲームに勝つと
名車2000GTのステッカーがもらえる!

The 43rd
**TOKYO MOTOR SHOW
2013**



☐ Official Airline



Lufthansa Group

Lufthansa Group

☐ Press Center Support

brother
at your side

brother

Canon

Canon



Nikon



Otsuka

Otsuka Pharmaceutical



SUBARU

Confidence in Motion

Celebrating 25 years of Subaru
with a full model change



LEVORG

On display at the SUBARU booth.

www.subaru.jp